



Vascular Instruments – Gefäßinstrumente

Vascular Prostheses

Gefäßprothesen

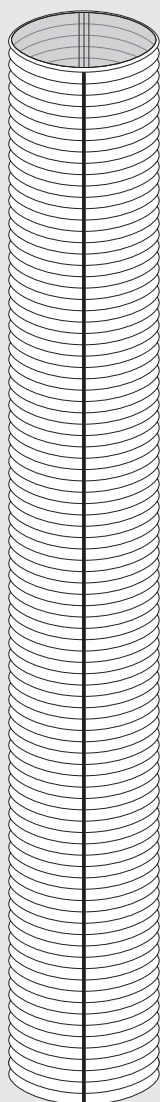
Uni-Graft® W

Woven, impregnated vascular prostheses

Gewebt, Gelatineimprägnierung

Uni-Graft® W – straight tubes

Uni-Graft® W – Gerade Röhren



| Cat. No. Art. Nr. | Length Länge | Diameter Durchmesser | Sales unit: pcs. Stück per PAK |
|----------------------|-----------------|-------------------------|-----------------------------------|
| 1106392 | 15 cm | 24 mm | 1 |
| 1106406 | | 26 mm | 1 |
| 1106414 | | 28 mm | 1 |
| 1106422 | | 30 mm | 1 |
| 1106430 | | 32 mm | 1 |
| 1106449 | | 34 mm | 1 |
| 1106457 | | 36 mm | 1 |
| 1106465 | | 38 mm | 1 |
| 1106635 | 30 cm | 24 mm | 1 |
| 1106643 | | 26 mm | 1 |
| 1106651 | | 28 mm | 1 |
| 1106660 | | 30 mm | 1 |
| 1106678 | | 32 mm | 1 |
| 1106686 | | 34 mm | 1 |
| 1106694 | | 36 mm | 1 |
| 1106708 | | 38 mm | 1 |

Vascular Instruments – Gefäßinstrumente

Vascular Prostheses

Gefäßprothesen

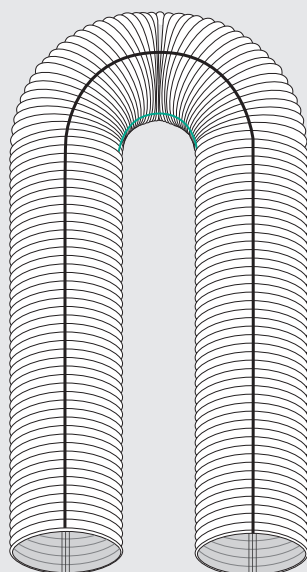
Uni-Graft® W Aortic Arch

Woven, impregnated vascular prostheses

Gewebt, Gelatineimprägnierung

Uni-Graft® W – Aortic Arch

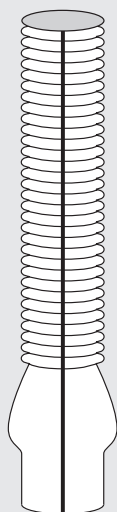
Uni-Graft® W – Aortenbogen



| Cat. No. Art. Nr. | Diameter Durchmesser | Angle Winkel | Sales unit: pcs. Stück per PAK |
|----------------------|-------------------------|-----------------|-----------------------------------|
| 1106801 | 26 mm | 90° | 1 |
| 1106802 | | 180° | 1 |
| 1106803 | 28 mm | 90° | 1 |
| 1106804 | | 180° | 1 |
| 1106806 | 30 mm | 90° | 1 |
| 1106807 | | 180° | 1 |
| 1106808 | 32 mm | 90° | 1 |
| 1106809 | | 180° | 1 |

Uni-Graft® W – Sinus

Uni-Graft® W – Sinus



| Cat. No. Art. Nr. | Length Länge | Diameter Durchmesser | Sales unit: pcs. Stück per PAK |
|----------------------|-----------------|-------------------------|-----------------------------------|
| 1106826 | 20 cm | 26 mm | 1 |
| 1106828 | | 28 mm | 1 |
| 1106830 | | 30 mm | 1 |
| 1106832 | | 32 mm | 1 |



Vascular Instruments – Gefäßinstrumente

Vascular Prostheses Gefäßprothesen



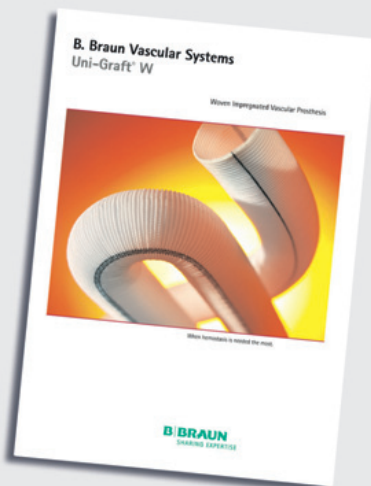
For further details see
brochure No. **6050129**.

Weitere Informationen finden Sie
in unserem Prospekt Nr. **XP0009**.



For further details see
brochure No. **6050152**.

Weitere Informationen finden Sie
in unserem Prospekt Nr. **6050152**.



For further details see
brochure No. **6050151**.

Weitere Informationen finden Sie
in unserem Prospekt Nr. **XP0097**.



For further details see
brochure No. **6050151**.

Weitere Informationen finden Sie
in unserem Prospekt Nr. **XP0180**.

Vascular Instruments – Gefäßinstrumente

Vascular Prostheses

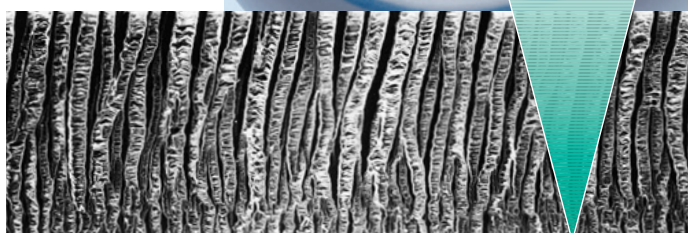
Gefäßprothesen

VascuGraft PTFE

Expanded PTFE vascular prostheses

Expandierte PTFE Gefäßprothesen

Outside Aussenseite



Inside Innenseite

60/20 V-porosity
60/20 V-Porosität

Vascular prostheses in one layer design with an advanced structure:

- radial nodes provide a unique flexibility and kink-resistance.
- V-porosity (60 µm pores outside, 20 µm pores inside) improves healing
- provides maximum protection against kinking or twisting
- removable helix support
- tapered, short taper and stepped taper configurations are available for use in special hemodynamic conditions

Einschichtige Gefäßprothese mit optimierter Wandstruktur

- Radiale Nodien ermöglichen ein einzigartiges, flexibles und knickstabiles Design
- V-förmige Poren (60 µm Porengröße außenseitig, 20 µm Porengröße innenseitig) beschleunigen die Protheseneinheilung
- Hohe Knick- und Kompressionsstabilität
- Abnehmbare Spiralverstärkung
- Verschiedene konische Konfigurationen für unterschiedliche hämodynamische Bedingungen verfügbar



Vascular Instruments – Gefäßinstrumente

Vascular Prostheses Gefäßprothesen

VascuGraft SOFT

Expanded PTFE vascular prostheses
Expandierte PTFE Gefäßprothesen



Optimized material properties

- reinforced two layer design reduces risk of unzipping
- higher burst strength
- increased tensile strength
- superior suture retention force
- easy to suture

Optimierte Materialeigenschaften

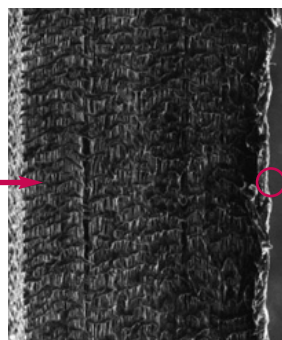
- Verstärktes Zwei-Komponenten-Wanddesign
- Verbesserte Geschmeidigkeit
- Hohes Nahrückhaltevermögen
- Einfaches Einnähen

Unique wrap design

- 60 µm wrap designed to promote better tissue attachment
- highly porous outer wrap for a "vein like feeling" (extremely soft surface integrity)

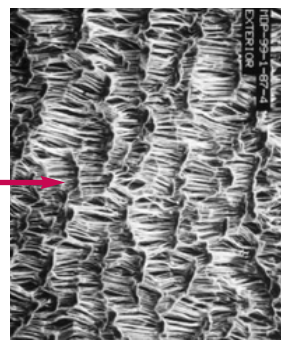
Einzigartiges Wanddesign

- Hochporöse Außenummantelung für venenähnliche Strukturen
- Bessere Zellanlagerung bei 60 µm Porengröße der Ummantelung

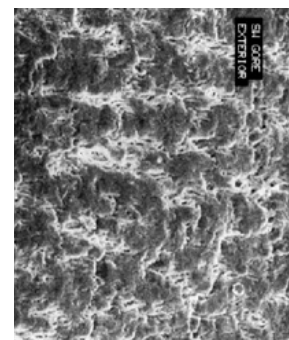


Inside
Innenseite

Outside
Aussenseite



Reinforced SOFT wrap
Verstärkte SOFT
Ummantelung



Conventional wrap
Herkömmliche
Ummantelung

Vascular Instruments – Gefäßinstrumente

Vascular Prostheses

Gefäßprothesen

VascuGraft PTFE

Expanded PTFE vascular prostheses

Expandierte PTFE Gefäßprothesen



VascuGraft PTFE – standard wall VascuGraft PTFE – Standard Wand

| Cat. No. Art. Nr. | Length Länge | Diameter Durchmesser | Sales unit: pcs. Stück per PAK |
|----------------------|-----------------|-------------------------|-----------------------------------|
| <u>V1103004</u> | 20 cm | 6 mm | 1 |
| <u>V1103006</u> | | 8 mm | 1 |
| <u>V1103007</u> | 30 cm | 6 mm | 1 |
| <u>V1103010</u> | 40 cm | 4 mm | 1 |
| <u>V1103011</u> | | 5 mm | 1 |
| <u>V1103012</u> | | 6 mm | 1 |
| <u>V1103013</u> | | 8 mm | 1 |
| <u>V1103015</u> | 50 cm | 5 mm | 1 |
| <u>V1103017</u> | | 6 mm | 1 |
| <u>V1103018</u> | | 7 mm | 1 |
| <u>V1103019</u> | | 8 mm | 1 |
| <u>V1103020</u> | | 10 mm | 1 |
| <u>V1103021</u> | 60 cm | 6 mm | 1 |
| <u>V1103025</u> | 70 cm | 4 mm | 1 |
| <u>V1103026</u> | | 5 mm | 1 |
| <u>V1103027</u> | | 6 mm | 1 |
| <u>V1103028</u> | | 7 mm | 1 |
| <u>V1103029</u> | | 8 mm | 1 |
| <u>V1103030</u> | | 10 mm | 1 |
| <u>V1103033</u> | 80 cm | 6 mm | 1 |
| <u>V1103039</u> | 90 cm | 8 mm | 1 |



Vascular Instruments – Gefäßinstrumente

Vascular Prostheses

Gefäßprothesen



VascuGraft PTFE – standard wall – helix supported

VascuGraft PTFE – Standard Wand – spiralverstärkt

| Cat. No. Art. Nr. | Length Länge | Diameter Durchmesser | Sales unit: pcs. Stück per PAK |
|----------------------|-----------------|-------------------------|-----------------------------------|
| <u>V1103051</u> | 40 cm | 6 mm | 1 |
| <u>V1103052</u> | | 8 mm | 1 |
| <u>V1103053</u> | 50 cm | 6 mm | 1 |
| <u>V1103054</u> | | 7 mm | 1 |
| <u>V1103055</u> | | 8 mm | 1 |
| <u>V1103056</u> | | 10 mm | 1 |
| <u>V1103057</u> | 60 cm | 6 mm | 1 |
| <u>V1103058</u> | | 8 mm | 1 |
| <u>V1103061</u> | 70 cm | 5 mm | 1 |
| <u>V1103062</u> | | 6 mm | 1 |
| <u>V1103063</u> | | 7 mm | 1 |
| <u>V1103064</u> | | 8 mm | 1 |
| <u>V1103068</u> | 80 cm | 6 mm | 1 |
| <u>V1103069</u> | | 7 mm | 1 |
| <u>V1103070</u> | | 8 mm | 1 |
| <u>V1103074</u> | 90 cm | 8 mm | 1 |



VascuGraft PTFE – standard wall – centre helix

VascuGraft PTFE – Standard Wand – zentral spiralisiert

| | | | |
|-----------------|-------|------|---|
| <u>V1103076</u> | 45 cm | 6 mm | 1 |
|-----------------|-------|------|---|

VascuGraft PTFE – standard wall – taper

VascuGraft PTFE – Standard Wand – konisch



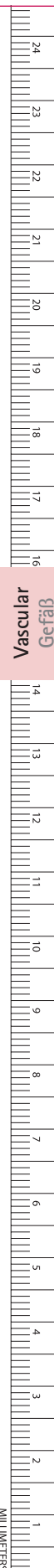
| | | | |
|-----------------|-------|----------|---|
| <u>V1103100</u> | 40 cm | 4 – 6 mm | 1 |
| <u>V1103101</u> | | 4 – 7 mm | 1 |
| <u>V1103104</u> | 50 cm | 4 – 7 mm | 1 |
| <u>V1103108</u> | 70 cm | 5 – 8 mm | 1 |

VascuGraft PTFE – standard wall – taper – helix supported

VascuGraft PTFE – Standard Wand – konisch – spiralverstärkt



| | | | |
|-----------------|-------|----------|---|
| <u>V1103114</u> | 70 cm | 4 – 7 mm | 1 |
| <u>V1103115</u> | | 5 – 8 mm | 1 |
| <u>V1103116</u> | | 6 – 8 mm | 1 |



Vascular
Gefäß

MILLIMETERS

Vascular Instruments – Gefäßinstrumente

Vascular Prostheses

Gefäßprothesen



VascuGraft PTFE – standard wall – short taper

VascuGraft PTFE – Standard Wand – kurz-konisch

| Cat. No. Art. Nr. | Length Länge | Diameter Durchmesser | Sales unit: pcs. Stück per PAK |
|----------------------|-----------------|-------------------------|-----------------------------------|
| <u>V1103086</u> | 30 cm | 4 – 7 mm | 1 |
| <u>V1103087</u> | 45 cm | 4 – 6 mm | 1 |
| <u>V1103088</u> | | 4 – 7 mm | 1 |
| <u>V1103089</u> | | 5 – 8 mm | 1 |



VascuGraft PTFE – standard wall – short taper – centre helix

VascuGraft PTFE – Standard Wand – kurz-konisch – zentral spiralisiert

| | | | |
|-----------------|-------|----------|---|
| <u>V1103097</u> | 45 cm | 4 – 6 mm | 1 |
|-----------------|-------|----------|---|



VascuGraft PTFE – standard wall – step taper

VascuGraft PTFE – Standard Wand – abgestuft konisch

| | | | |
|-----------------|-------|----------|---|
| <u>V1103078</u> | 30 cm | 4 – 7 mm | 1 |
|-----------------|-------|----------|---|



VascuGraft PTFE – thin wall

VascuGraft PTFE – Dünnwand

| | | | |
|-----------------|-------|--------|---|
| <u>V1103250</u> | 10 cm | 3 mm | 1 |
| <u>V1103251</u> | | 3.5 mm | 1 |
| <u>V1103252</u> | | 4 mm | 1 |
| <u>V1103129</u> | 20 cm | 6 mm | 1 |
| <u>V1103135</u> | 40 cm | 4 mm | 1 |
| <u>V1103136</u> | | 5 mm | 1 |
| <u>V1103137</u> | | 6 mm | 1 |
| <u>V1103138</u> | | 8 mm | 1 |
| <u>V1103142</u> | 50 cm | 6 mm | 1 |
| <u>V1103144</u> | | 8 mm | 1 |
| <u>V1103146</u> | 60 cm | 6 mm | 1 |
| <u>V1103149</u> | | 8 mm | 1 |
| <u>V1103151</u> | 70 cm | 4 mm | 1 |
| <u>V1103153</u> | | 6 mm | 1 |
| <u>V1103154</u> | | 7 mm | 1 |
| <u>V1103155</u> | | 8 mm | 1 |
| <u>V1103159</u> | 80 cm | 6 mm | 1 |
| <u>V1103160</u> | | 7 mm | 1 |
| <u>V1103161</u> | | 8 mm | 1 |



Vascular Instruments – Gefäßinstrumente

Vascular Prostheses Gefäßprothesen



VascuGraft PTFE – thin wall – helix supported VascuGraft PTFE – Dünnwand – spiralverstärkt

| Cat. No. Art. Nr. | Length Länge | Diameter Durchmesser | Sales unit: pcs. Stück per PAK |
|----------------------|-----------------|-------------------------|-----------------------------------|
| <u>V1103171</u> | 20 cm | 6 mm | 1 |
| <u>V1103177</u> | 40 cm | 6 mm | 1 |
| <u>V1103178</u> | | 8 mm | 1 |
| <u>V1103182</u> | 50 cm | 6 mm | 1 |
| <u>V1103183</u> | | 7 mm | 1 |
| <u>V1103184</u> | | 8 mm | 1 |
| <u>V1103186</u> | 60 cm | 6 mm | 1 |
| <u>V1103187</u> | | 8 mm | 1 |
| <u>V1103189</u> | 70 cm | 5 mm | 1 |
| <u>V1103190</u> | | 6 mm | 1 |
| <u>V1103191</u> | | 7 mm | 1 |
| <u>V1103192</u> | | 8 mm | 1 |
| <u>V1103194</u> | 80 cm | 5 mm | 1 |
| <u>V1103195</u> | | 6 mm | 1 |
| <u>V1103197</u> | | 8 mm | 1 |



VascuGraft PTFE – thin wall – taper VascuGraft PTFE – Dünnwand – konisch

| | | | |
|-----------------|-------|----------|---|
| <u>V1103216</u> | 40 cm | 4 – 7 mm | 1 |
| <u>V1103217</u> | | 5 – 8 mm | 1 |
| <u>V1103221</u> | 70 cm | 4 – 6 mm | 1 |
| <u>V1103222</u> | | 4 – 7 mm | 1 |



VascuGraft PTFE – thin wall – taper – helix supported VascuGraft PTFE – Dünnwand – konisch – spiralverstärkt

| | | | |
|-----------------|-------|----------|---|
| <u>V1103206</u> | 70 cm | 4 – 7 mm | 1 |
| <u>V1103207</u> | | 5 – 8 mm | 1 |
| <u>V1103208</u> | | 6 – 8 mm | 1 |

VascuGraft SOFT

Second generation of reinforced ePTFE-grafts with two layer design

Zweite Generation verstärkter ePTFE Prothesen mit Zwei-Komponenten-Wand-Design

VascuGraft SOFT – standard wall

VascuGraft SOFT – Standard Wand



| Cat. No. Art. Nr. | Length Länge | Diameter Durchmesser | Sales unit: pcs. Stück per PAK |
|----------------------|-----------------|-------------------------|-----------------------------------|
| <u>V1101312</u> | 40 cm | 6 mm | 1 |
| <u>V1101317</u> | 50 cm | 6 mm | 1 |
| <u>V1101331</u> | 80 cm | 7 mm | 1 |

VascuGraft SOFT – standard wall – helix supported

VascuGraft SOFT – Standard Wand – spiralverstärkt



| | | | |
|-----------------|-------|------|---|
| <u>V1101362</u> | 50 cm | 6 mm | 1 |
| <u>V1101375</u> | 80 cm | 6 mm | 1 |

VascuGraft SOFT – standard wall – centre helix

VascuGraft SOFT – Standard Wand – zentral spiralisiert



| | | | |
|-----------------|-------|------|---|
| <u>V1101392</u> | 45 cm | 6 mm | 1 |
|-----------------|-------|------|---|



Vascular Instruments – Gefäßinstrumente

Vascular Prostheses Gefäßprothesen



VascuGraft SOFT – thin wall VascuGraft SOFT – Dünnwand

| Cat. No. Art. Nr. | Length Länge | Diameter Durchmesser | Sales unit: pcs. Stück per PAK |
|----------------------|-----------------|-------------------------|-----------------------------------|
| <u>V1101469</u> | 40 cm | 6 mm | 1 |
| <u>V1101470</u> | | 8 mm | 1 |
| <u>V1101475</u> | 50 cm | 6 mm | 1 |
| <u>V1101486</u> | 70 cm | 7 mm | 1 |
| <u>V1101487</u> | | 8 mm | 1 |
| <u>V1101490</u> | 80 cm | 6 mm | |
| <u>V1101492</u> | | 8 mm | 1 |



VascuGraft SOFT – thin wall – helix support VascuGraft SOFT – Dünnwand – spiralverstärkt

| | | | |
|-----------------|-------|------|---|
| <u>V1101512</u> | 50 cm | 6 mm | 1 |
| <u>V1101514</u> | | 8 mm | 1 |
| <u>V1101520</u> | 70 cm | 6 mm | 1 |
| <u>V1101521</u> | | 7 mm | 1 |
| <u>V1101522</u> | | 8 mm | 1 |
| <u>V1101527</u> | 80 cm | 8 mm | 1 |

Vascular Instruments – Gefäßinstrumente

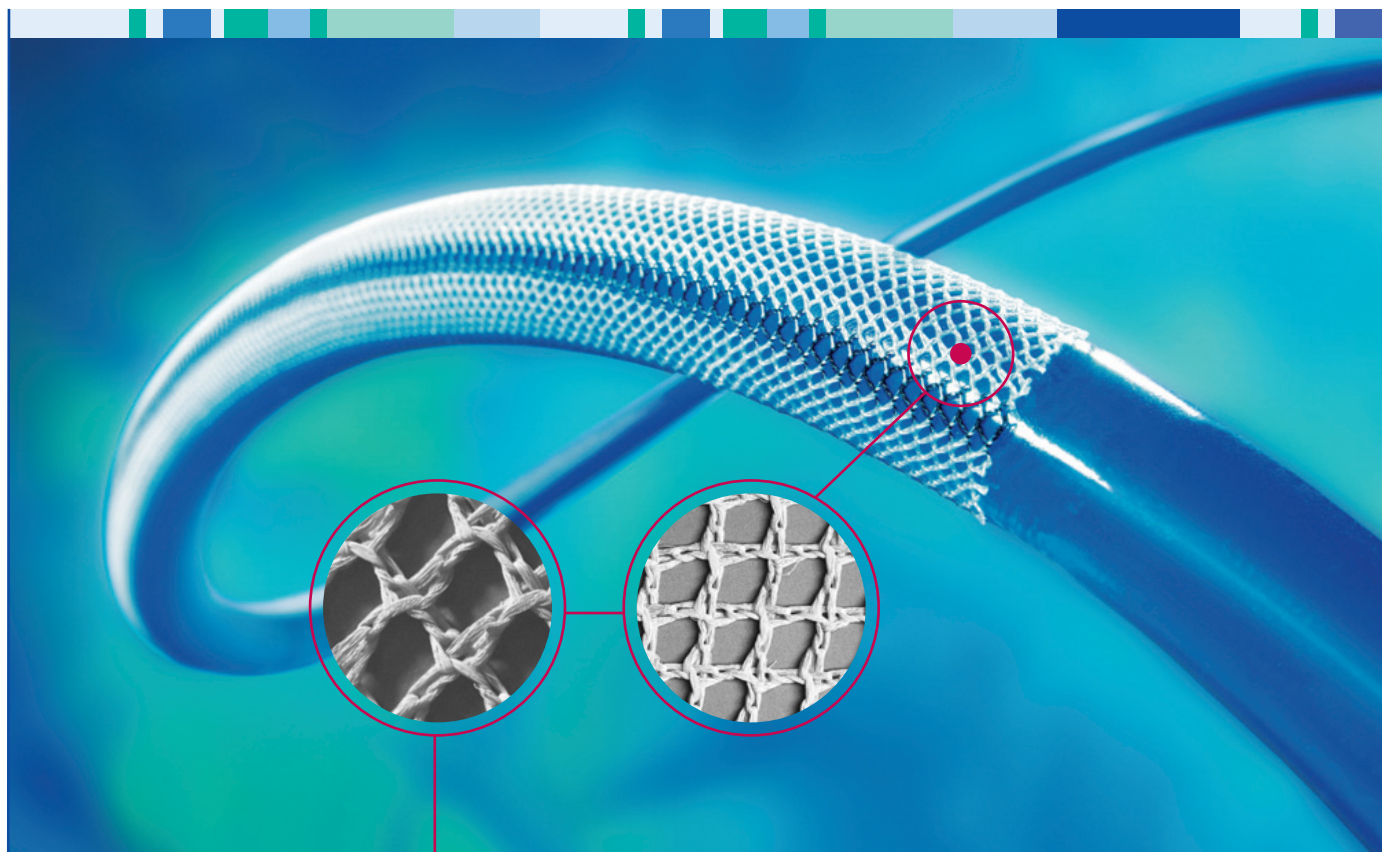
Vascular Prostheses

Gefäßprothesen

ProVena

Open-porous external scaffolding prostheses for autologous veins

Offenporige Polyesterprothese zur Venenummantelung



ProVena's external scaffolding properties enhance patency of autologous veins. The easy to use applicator set saves additional procedure time.

Durch die Ummantelung der Vene mit ProVena wird die Offenheitsrate autologer Venen erhöht. Das Applikator-Set ist einfach in der Handhabung und spart Operationszeit.

ProVena is an open-porous prosthesis with "honeycomb-like" structure for intra-operative external scaffolding of autologous veins.

- unique product technology to stabilize autologous veins
- better patency-rates
- reduces arterial stress and intimal hyperplasia
- homogenous adaptation of ProVena to external surface of the vein
- improved vein lumen
- easy to use application set to save procedure time

ProVena ist eine großporige Gefäßprothese mit wabenartiger Struktur zur intraoperativen Ummantelung autologer Venen.

- Reduktion des arteriellen Stresses und der intimalen Hyperplasie
- Bessere Offenheitsrate
- Stabilisierung autologer Venen
- Gleichförmige Anlagerung der Vene an die ProVena Oberfläche
- Verbessertes Venenlumen
- Leichte Applikation spart Operationszeit



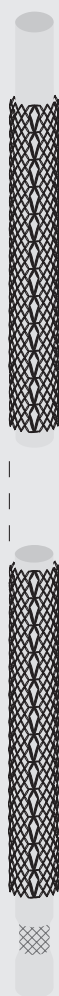
Vascular Instruments – Gefäßinstrumente

Vascular Prostheses Gefäßprothesen

ProVena

Open-porous external scaffolding prostheses for autologous veins

Offenporige Polyesterprothese zur Venenummantelung



Provena Provena

| Cat. No. Art. Nr. | Length Länge | Diameter Durchmesser | Sales unit: pcs. Stück per PAK |
|----------------------|-----------------|-------------------------|-----------------------------------|
| 110 5010 | 40 cm | 4 mm | 1 |
| 110 5011 | | 5 mm | 1 |
| 110 5012 | | 6 mm | 1 |
| 110 5013 | | 7 mm | 1 |
| 110 5014 | | 8 mm | 1 |
| 110 5016 | 80 cm | 4 mm | 1 |
| 110 5017 | | 5 mm | 1 |
| 110 5018 | | 6 mm | 1 |
| 110 5019 | | 7 mm | 1 |
| 110 5020 | | 8 mm | 1 |
| 110 5021 | | 10 mm | 1 |

ProVena applicator ProVena Applikator

| | | | |
|----------------|-------|------|---|
| 1105026 | 13 cm | 5 mm | 1 |
| 1105027 | | 6 mm | 1 |
| 1105028 | | 7 mm | 1 |
| 1105029 | | 8 mm | 1 |

ProVena cannula ProVena Kanüle

| | | | |
|----------------|-------|------|---|
| 1105030 | 14 cm | 2 mm | 1 |
|----------------|-------|------|---|

ProVena application set ProVena Applikations-Set

| | |
|----------------|---|
| 1105031 | 1 |
|----------------|---|

contains:

Applicator, length 13 cm, ø 5 mm

Applikator, Länge 13 cm, ø 5 mm

Applicator, length 13 cm, ø 6 mm

Applikator, Länge 13 cm, ø 6 mm

Applicator, length 13 cm, ø 7 mm

Applikator, Länge 13 cm, ø 7 mm

Applicator, length 13 cm, ø 8 mm

Applikator, Länge 13 cm, ø 8 mm

Cannula, length 14 cm, ø 2 mm

Kanüle, Länge 14 cm, ø 2 mm

Vascular
Gefäß

MILLIMETERS

Vascular Instruments – Gefäßinstrumente

Vascular Patches

Gefäß Patches

Vascular Patch

Veno Patch



Microporous patch for vascular reconstructions

- high compliance
- no suture hole bleeding due to the high elasticity of the polymer fibres
- blood tight
- excellent handling properties
- good tissue incorporation

Mikroporöses Polyesterurethan-Patch

- Hohe Nahtausrissfestigkeit
- Keine Stichkanalblutungen
- Blutdicht
- Ausgezeichnete Modellierbarkeit durch hohe Materialflexibilität
- sehr gute Einheilung

Valve reconstruction with extraluminal valvuloplasty for venous insufficiency

- extremely thin (thickness 0,2 mm)
- excellent handling properties

Klappenrekonstruktion mittels extraluminaler Valvuloplastie bei Stamminuffizienz der Vena saphena magna

- Extrem dünne Wandstärke von 0,2 mm
- Ausgezeichnete Verarbeitungsmöglichkeiten



Vascular Instruments – Gefäßinstrumente

Vascular Patches

Gefäß Patches

Vascular Patch

Microporous, elastic polyesterurethane material for vascular patch procedures.

Mikroporöses, elastisches Polyesterurethan für vaskuläre Patch Plastiken



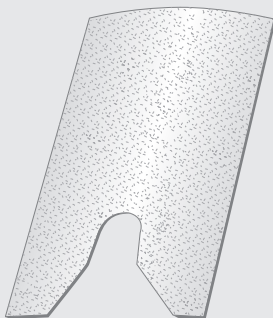
Vascular Patch

| Cat. No. Art. Nr. | Size Größe | Sales unit: pcs. Stück per PAK |
|----------------------|---------------|-----------------------------------|
| 1107348 | 1 x 7 cm | 1 |
| 1107283 | 1 x 7 cm | 2 |
| 1107291 | 1 x 7 cm | 5 |
| 1107330 | 2 x 9 cm | 1 |
| 1107267 | 2 x 9 cm | 2 |
| 1107275 | 2 x 9 cm | 5 |
| 1107356 | 3 x 4 cm | 1 |
| 1107321 | 3 x 4 cm | 2 |
| 1107305 | 3 x 4 cm | 5 |

Veno Patch

Microporous, elastic polyesterurethane for extraluminal valvuloplasty

Mikroporöses, elastisches Polyesterurethan zur extraluminale Valvuloplastie

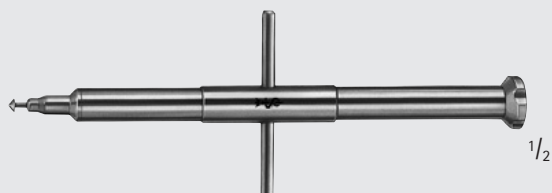


Veno Patch

| | | |
|----------------|----------|---|
| 1107500 | 2 x 4 cm | 1 |
|----------------|----------|---|

Vascular Instruments – Gefäßinstrumente

Vascular Instruments, Aorta Punches, Irrigating Cannulae, Vascular Dilators, Tunnelling, Vein Strippers
Gefäßinstrumente, Aortenstanzen, Spülkanülen, Gefäßdilatoren, Tunnelierung, Venen-Stripper



FB201R

Diam. / Ø 3 mm



FB202R

3.5 mm



FB194R

4 mm



FB203R

4.5 mm



FB195R

Diam. / Ø 5 mm



FB204R

5.5 mm



FB196R

6 mm

FB194R-FB204R

Aorta punches

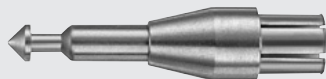
Aortenstanzen

140 mm, 5 1/2"



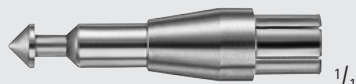
FB184R

Diam. / Ø 4 mm



FB185R

Diam. / Ø 5 mm



FB186R

Diam. / Ø 6 mm

FB184R-FB186R

VASCUCUT Punch heads

Sales unit:

PAK = Package of 5 pieces

VASCUCUT Stanzenköpfe

Bestelleinheit:

PAK = Packung à 5 Stück



FB180R

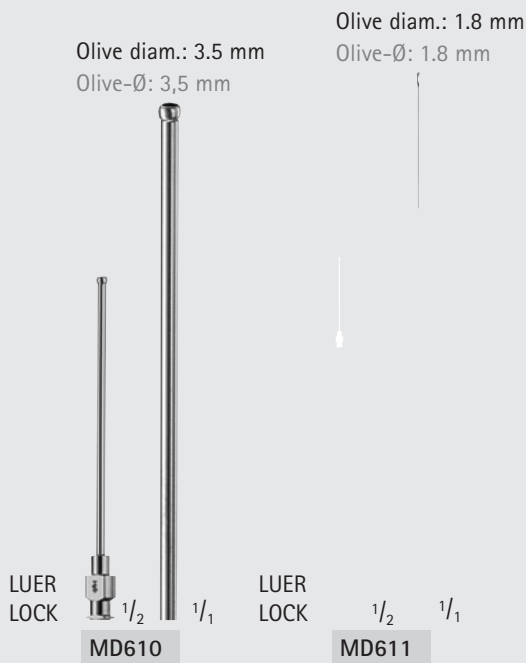
VASCUCUT Handle only

VASCUCUT Handgriff allein



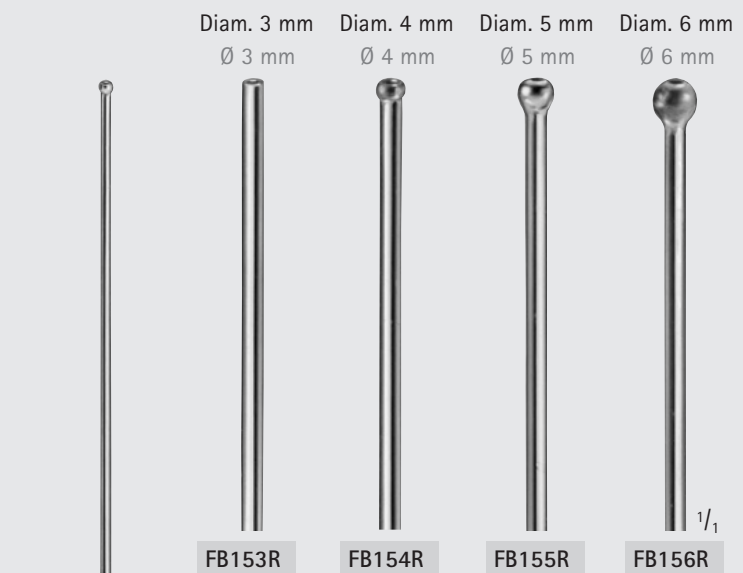
Vascular Instruments – Gefäßinstrumente

Vascular Instruments, Aorta Punches, Irrigating Cannulae, Vascular Dilators, Tunnelling, Vein Strippers
Gefäßinstrumente, Aortenstanzen, Spülkanülen, Gefäßdilatoren, Tunnelierung, Venen-Stripper



| | Outer diam. Außen-Ø | Gauge Gauge | Length Länge |
|--------------|------------------------|----------------|-----------------|
| MD610 | 2.4 mm | 13 | 90 mm, 3 1/2" |
| MD611 | 1.2 mm | 18 | 95 mm, 3 3/4" |

Heparin needles
Heparin-Nadeln



SCHMID

FB153R-FB156R

Vessel irrigating cannulae, malleable, silver plated
Gefäß-Spülkanülen, biegsam, versilbert
150 mm, 6"



GF793R

Suction handle with LUER LOCK
Sauggriff mit LUER Ansatz
155 mm, 6"



BLAKE

EB220R

Embolus grasping forceps
Embolusfasszange
205 mm, 8"

Vascular
Gefäß

MILLIMETERS

Vascular Instruments – Gefäßinstrumente

Vascular Instruments, Aorta Punches, Irrigating Cannulae, Vascular Dilators, Tunnelling, Vein Strippers
Gefäßinstrumente, Aortenstanzen, Spülkanülen, Gefäßdilatoren, Tunnelierung, Venen-Stripper



DE BAKEY

FB160R–FB172R

Vascular dilators, malleable

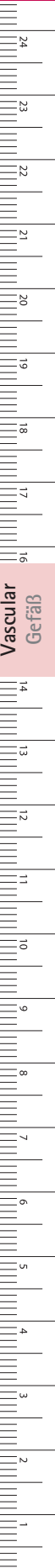
Gefäßdilatoren, biegsam

190 mm, 7 1/2"

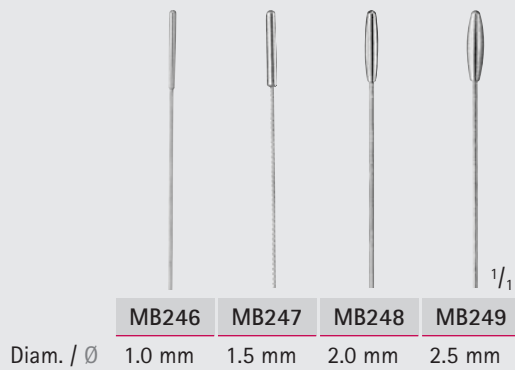


Vascular Instruments – Gefäßinstrumente

Vascular Instruments, Aorta Punches, Irrigating Cannulae, Vascular Dilators, Tunnelling, Vein Strippers
Gefäßinstrumente, Aortenstanzen, Spülkanülen, Gefäßdilatoren, Tunnelierung, Venen-Stripper



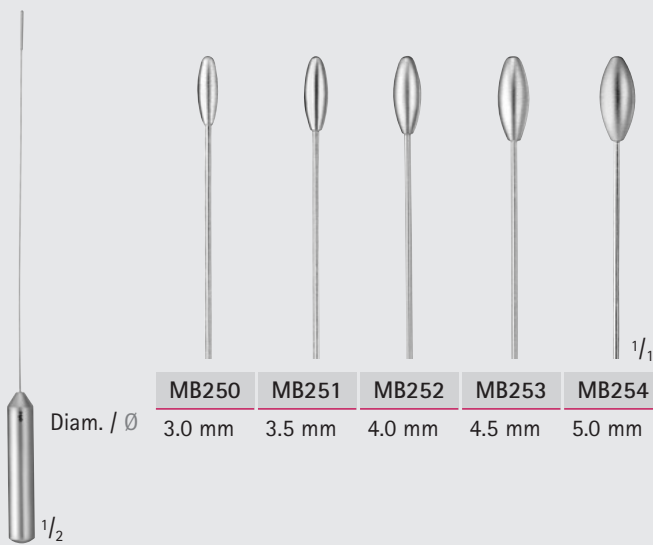
Vascular
Gefäß



Diam. / Ø

MB246 MB247 MB248 MB249

1.0 mm 1.5 mm 2.0 mm 2.5 mm



Diam. / Ø

MB250 MB251 MB252 MB253 MB254

3.0 mm 3.5 mm 4.0 mm 4.5 mm 5.0 mm

GARRETT

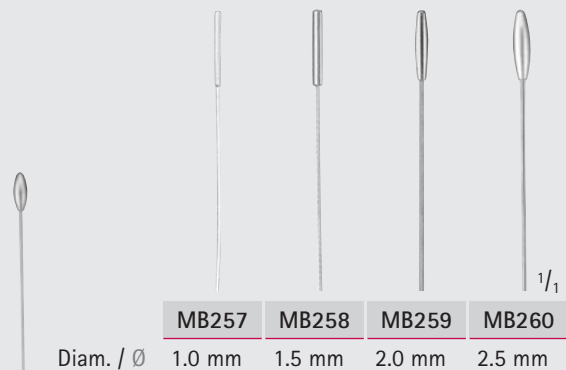
MB246 – MB254

Vascular dilators, malleable
Gefäßdilatoren, biegsam
140 mm, 5 1/2"

GARRETT

MB245

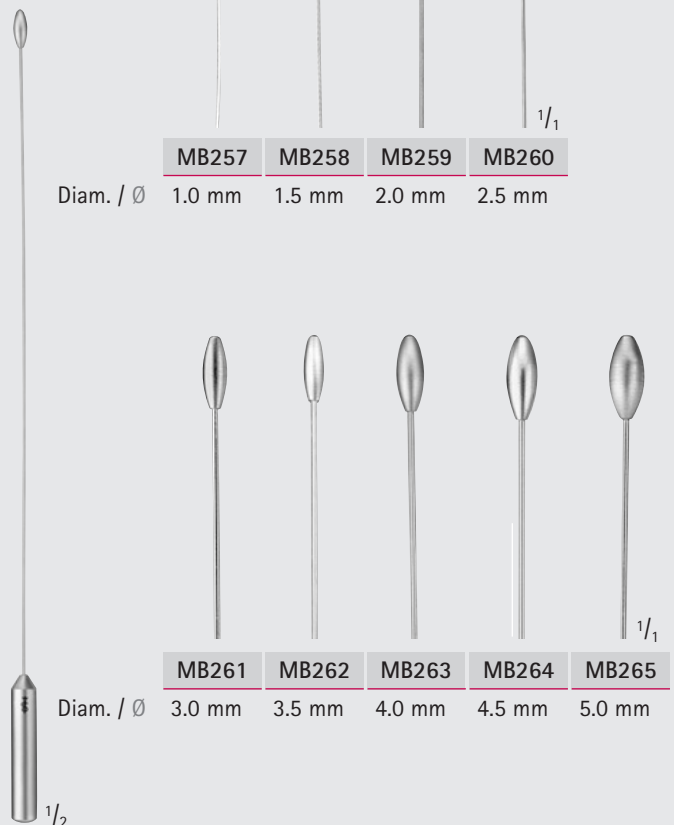
Set complete, consisting of:
MB246-MB254, 1 dilator of each
Set komplett, bestehend aus:
MB246-MB254, jeweils 1 Dilator



Diam. / Ø

MB257 MB258 MB259 MB260

1.0 mm 1.5 mm 2.0 mm 2.5 mm



Diam. / Ø

MB261 MB262 MB263 MB264 MB265

3.0 mm 3.5 mm 4.0 mm 4.5 mm 5.0 mm

GARRETT

MB257 – MB265

Vascular dilators, malleable
Gefäßdilatoren, biegsam
215 mm, 8 1/2"

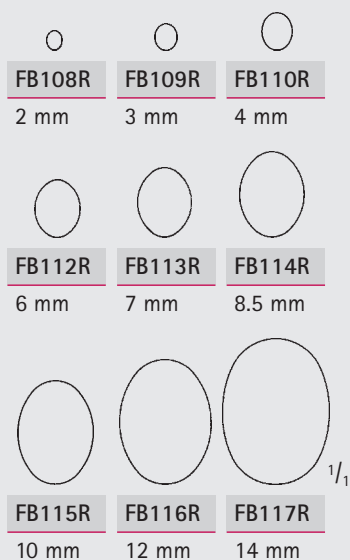
GARRETT

MB256

Set complete, consisting of:
MB257-MB265, 1 dilator of each
Set komplett, bestehend aus:
MB257-MB265, jeweils 1 Dilator

Vascular Instruments – Gefäßinstrumente

Vascular Instruments, Aorta Punches, Irrigating Cannulae, Vascular Dilators, Tunnelling, Vein Strippers
Gefäßinstrumente, Aortenstanzen, Spülkanülen, Gefäßdilatoren, Tunnelierung, Venen-Stripper



FB108R–FB117R
Endarterectomy strippers
Endarterektomiestripper
550 mm, 22"



FB119R
Handle for FB108R–FB117R
Griff für FB108R–FB117R
110 mm, 4 3/8"



RUMEL–BELMONT
FB651R
325 mm, 13"
Diam. / Ø 4 mm



FB653R
Guide only
Mandrin allein

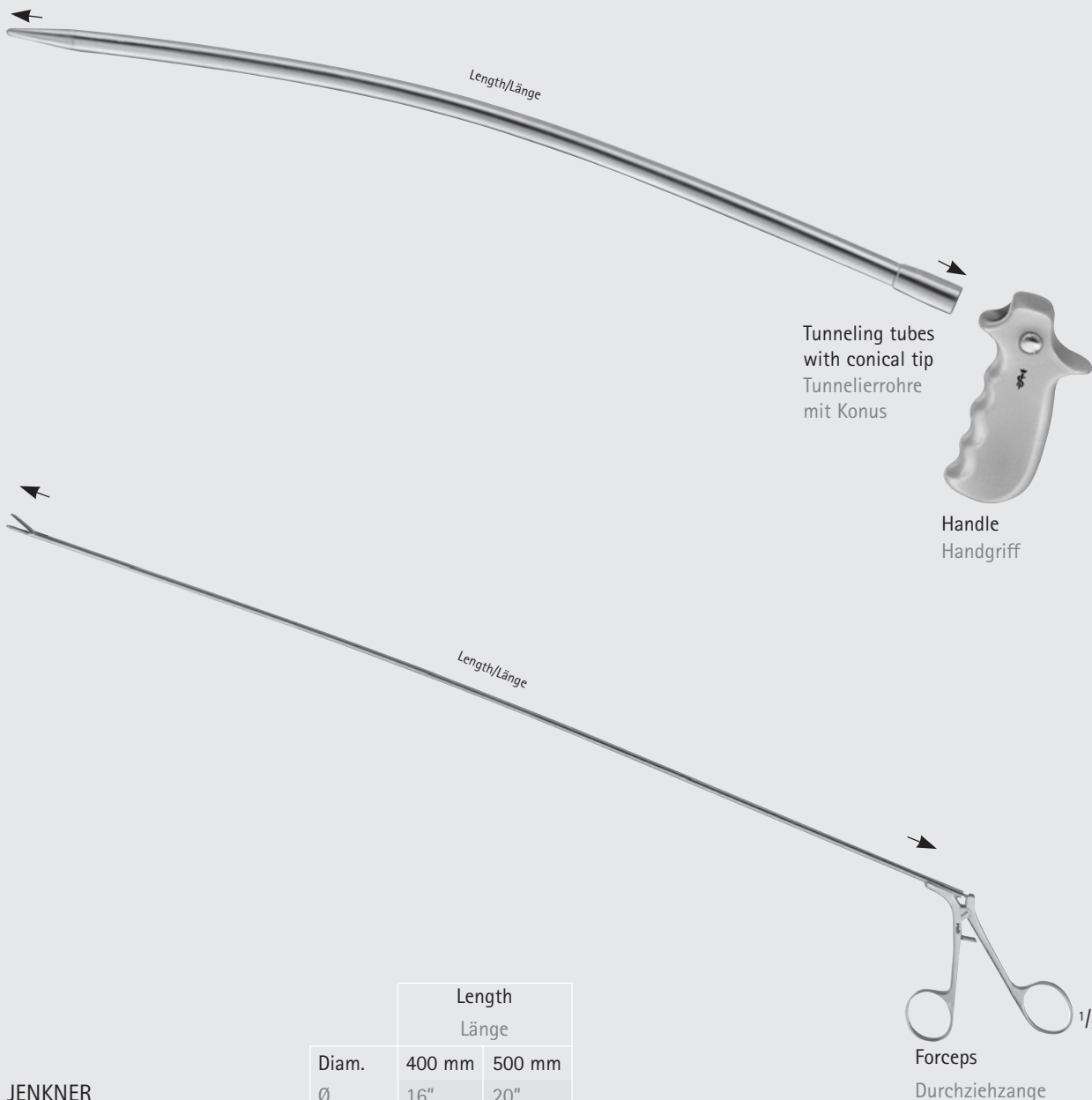


FB654R
Guide only
Mandrin allein



Vascular Instruments – Gefäßinstrumente

Vascular Instruments, Aorta Punches, Irrigating Cannulae, Vascular Dilators, Tunnelling, Vein Strippers
Gefäßinstrumente, Aortenstanzen, Spülkanülen, Gefäßdilatoren, Tunnelierung, Venen-Stripper



| | Diam. Ø | Length Länge | |
|----------------------------------|------------|-----------------|---------------|
| | | 400 mm 16" | 500 mm 20" |
| JENKNER | | | |
| Tunneling tubes with conical tip | 12 mm | FC004R | FC005R |
| Tunnelierrohre mit Konus | 14 mm | FC014R | FC015R |
| | 17 mm | | FC025R |
| Handle | | FC030 | |
| Handgriff | | | |
| Forceps | | FC034R | FC035R |
| Durchziehzange | | | |

Information about the operative procedure see leaflet C06011

Informationen über das operative Vorgehen siehe Prospekt C06011



Vascular Instruments – Gefäßinstrumente

Vascular Instruments, Aorta Punches, Irrigating Cannulae, Vascular Dilators, Tunnelling, Vein Strippers
Gefäßinstrumente, Aortenstanzen, Spülkanülen, Gefäßdilatoren, Tunnelierung, Venen-Stripper

■ The slight curvature of the introducer forceps permits handling during tunneling. Here the prosthesis can be drawn in by applying the introducer forceps directly to the prosthesis (alloplastic prosthesis) or can be drawn in by means of the bulldog clamp (autologous/homologous prosthesis). Thanks to the interlocking fit, the bulldog clamp rests non-displaceable and securely in the jaw of the introducer forceps.

■ Die leichte Krümmung der Zange ermöglicht ein Handling beim Tunnelieren. Zum Durchziehen der Prothese kann die Zange entweder direkt angelegt werden (alloplastische Prothesen) oder mittels der Bulldogklemme (autologe/homologe Prothesen). Die Bulldogklemme sitzt dank Formschluss unverschiebbar und sicher im Maul der Einzugszange.



ALLENBERG

FC048R

curved
gebogen

540 mm, 21 1/2"



FC049R

Bulldog clamp
Bulldog-Klemme
40 mm, 1 1/2"



Vascular Instruments – Gefäßinstrumente

Vascular Instruments, Aorta Punches, Irrigating Cannulae, Vascular Dilators, Tunnelling, Vein Strippers
Gefäßinstrumente, Aortenstanzen, Spülkanülen, Gefäßdilatoren, Tunnelierung, Venen-Stripper

Spare parts for FB030R

Ersatzteile für FB030R



NABATOFF

FB033

Flexible plastic probe tip

Kunststoff-Sondenspitze



1/1

NABATOFF

Diam.

Ø

FB034R 3 mm

Probe tip, metal

Metall-Sondenspitze



NABATOFF

FB030R

Vein stripper set, consisting of:

- FB031R Metal case
- FB032R Flexible cable, 36" long
- FB033 Flexible plastic probe tip
- FB034R Metal probe tip
- FB035R Metal olive, diam. 6 mm
- FB036R Metal olive, diam. 9 mm
- FB037R Metal olive, diam. 12 mm
- FB038R Metal olive, diam. 15 mm
- FB040R Handle for flexible cable

Venenstripper-Besteck, bestehend aus:

- FB031R Metalletui
- FB032R Zugseil, 900 mm lang
- FB033 Kunststoff-Sondenspitze
- FB034R Metall-Sondenspitze
- FB035R Metallolive, Ø 6 mm
- FB036R Metallolive, Ø 9 mm
- FB037R Metallolive, Ø 12 mm
- FB038R Metallolive, Ø 15 mm
- FB040R Griff für Zugseil

NABATOFF

Diam.

Ø

FB035R 6 mm

FB036R 9 mm

FB037R 12 mm

FB038R 15 mm

Olives only

Oliven allein



FB035R



FB036R



FB037R



FB038R

1/1



NABATOFF

FB040R

Handle only

Griff allein



FB032R

Flexible cable

Zugseil

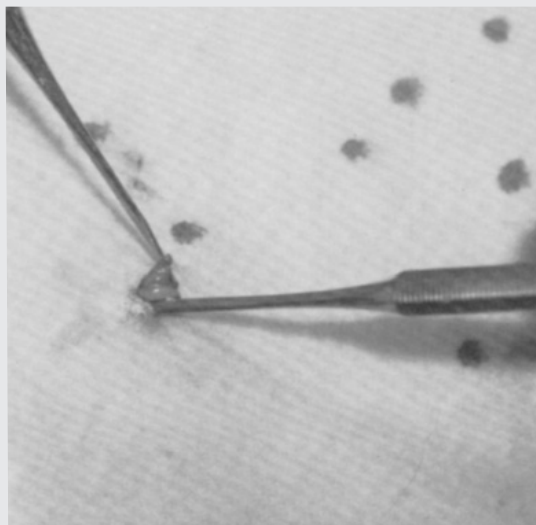
900 mm, 36"

Vascular
Gefäß

MILLIMETERS

Vascular Instruments – Gefäßinstrumente

Vascular Instruments, Aorta Punches, Irrigating Cannulae, Vascular Dilators, Tunnelling, Vein Strippers
Gefäßinstrumente, Aortenstanzen, Spülkanülen, Gefäßdilatoren, Tunnelierung, Venen-Stripper



VARADY

FB050R

Mini vein stripper set, consisting of:

- FB031R Metal case
- FB051R Flexible cable, 17 1/2" long, polyethylene coating
- FB053R Metal olive, diam. 3 mm
- FB054R Metal olive, diam. 4 mm
- FB055R Metal olive, diam. 5 mm

Mini-Venenstripper-Set, bestehend aus:

- FB031R Metalletui
- FB051R Zugseil, 450 mm lang, kunststoffummantelt
- FB053R Metallolive, Ø 3 mm
- FB054R Metallolive, Ø 4 mm
- FB055R Metallolive, Ø 5 mm

Spare parts for FB050R

Ersatzteile für FB050R

VARADY

Diam.

Ø

| | |
|---------------|------|
| FB053R | 3 mm |
| FB054R | 4 mm |
| FB055R | 5 mm |

Olives only

Oliven allein



VARADY

FB051R

Cable, flexible, polyethylene coating

Zugseil, kunststoffummantelt

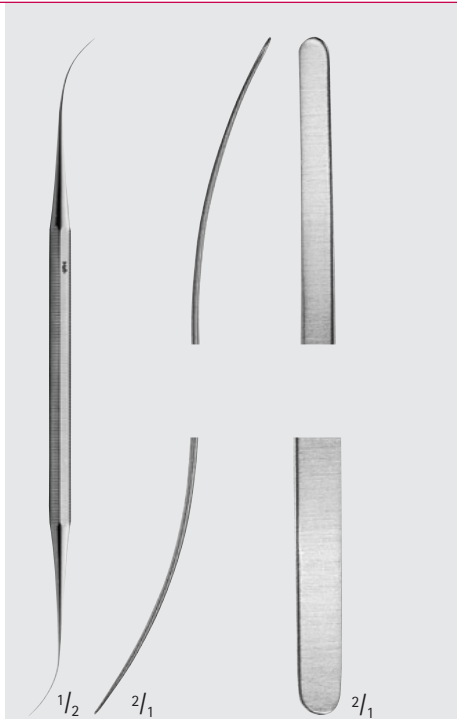
450 mm, 17 1/2"



Kraujagysliniai instrumentai

Vascular Instruments – Gefäßinstrumente

Vascular Instruments, Aorta Punches, Irrigating Cannulae, Vascular Dilators, Tunnelling, Vein Strippers
Gefäßinstrumente, Aortenstanzen, Spülkanülen, Gefäßdilatoren, Tunnelierung, Venen-Stripper



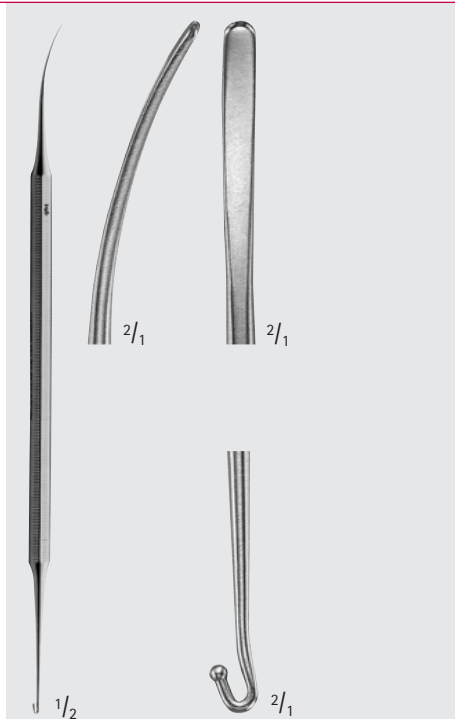
VARADY

FB120R

Phlebodissector

Phlebodissektor

180 mm, 7"



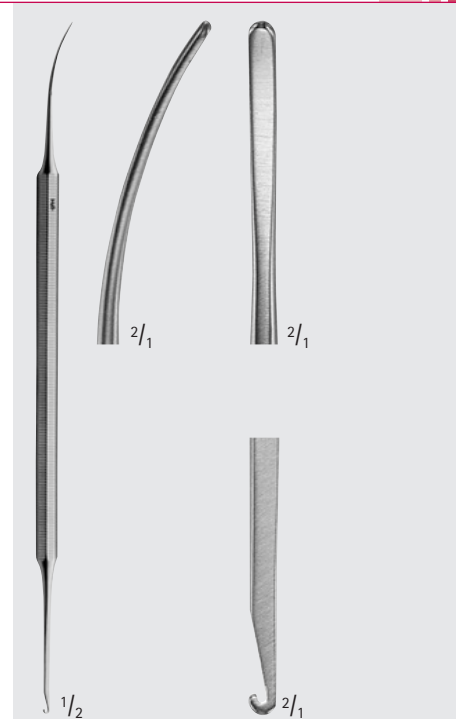
VARADY

FB121R

Phlebextractor

Phlebextraktor

180 mm, 7"



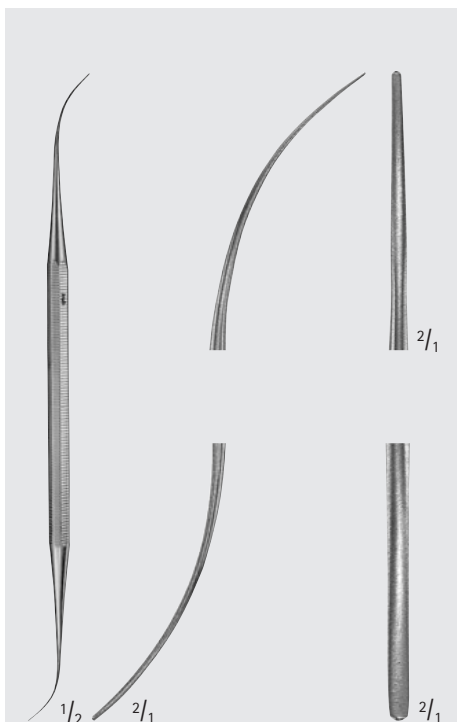
VARADY

FB122R

Phlebextractor Floboekstraktorius

Phlebextraktor

180 mm, 7"



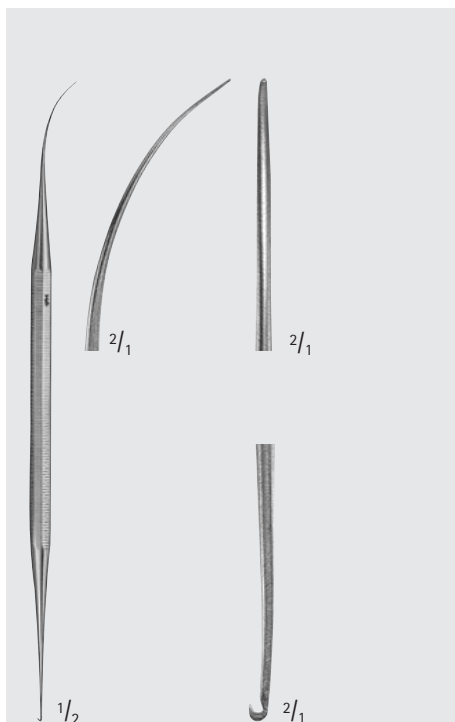
VARADY

FB124R

Micro spatula, double ended

Mikro-Doppelspatel

175 mm, 7"



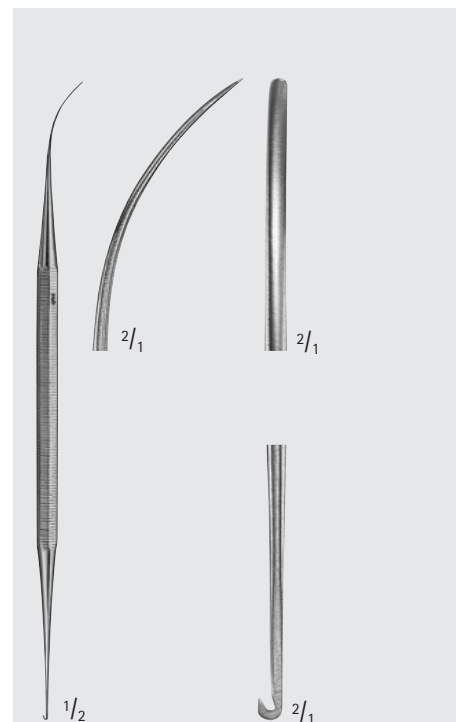
VARADY

FB125R

Micro phlebextractor

Mikro-Phlebextraktor

170 mm, 6 ³/₄"



VARADY

FB126R

Mini phlebextractor Mini-fleboekstraktorius

Mini-Phlebextraktor

170 mm, 6 ³/₄"

Vascular
Gefäß

MILLIMETERS

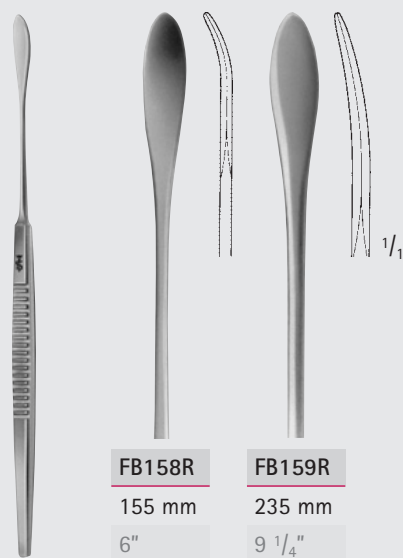
Vascular Instruments – Gefäßinstrumente

Vascular Spatulas, Dissectors, Elevators

Gefäßspatel, Dissektoren, Elevatoren



Vascular
Gefäß



FB158R

155 mm

6"

FB159R

235 mm

9 1/4"

SCHMID

FB158R-FB159R

blunt

stumpf



DAVIS

FF300R

245 mm, 9 3/4"



FF301R

FF302R

TÖNNIS

FF301R-FF302R

240 mm, 9 1/2"



Vascular Instruments – Gefäßinstrumente

Vascular Spatulas, Dissectors, Elevators

Gefäßspatel, Dissektoren, Elevatoren



FB150R 185 mm 7 1/4"

FB151R 215 mm 8 1/2"

blunt

stumpf



FD333R

230 mm, 9"



HALLE

OL160R

blunt

stumpf

180 mm, 7"



FREER

OL165R

blunt/sharp

stumpf/scharf

185 mm, 7 1/4"

Vascular
Gefäß

MILLIMETERS

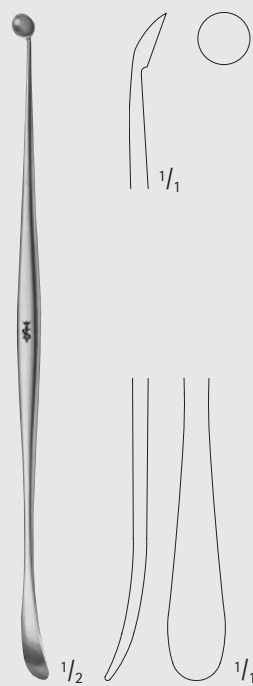
Vascular Instruments – Gefäßinstrumente

Vascular Spatulas, Dissectors, Elevators

Gefäßspatel, Dissektoren, Elevatoren



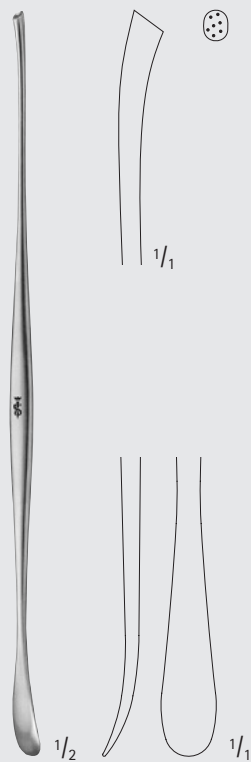
Vascular
Gefäß



PENFIELD

FF291R

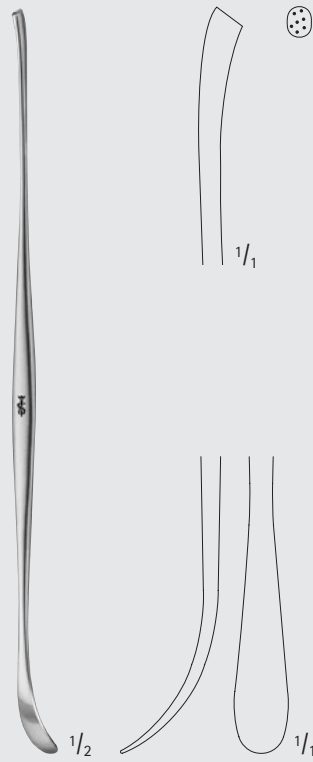
Fig. 1
175 mm, 7"



PENFIELD

FF292R

Fig. 2
195 mm, 7 3/4"



PENFIELD

FF293R

Fig. 3
195 mm, 7 3/4"



PENFIELD

FF294R

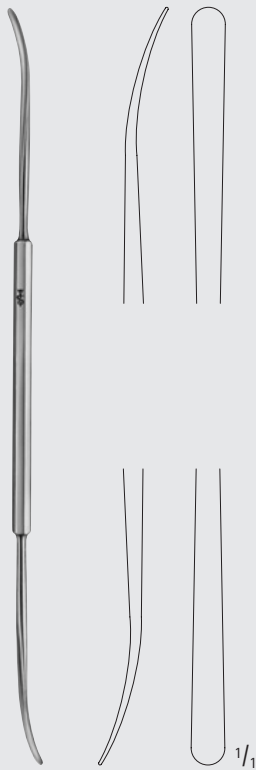
Fig. 4
205 mm, 8"



Vascular Instruments – Gefäßinstrumente

Vascular Spatulas, Dissectors, Elevators

Gefäßspatel, Dissektoren, Elevatoren



SWEDISH

FF347R 180 mm, 7"

light pattern

leichtes Modell

FF348R 200 mm, 8"

heavy pattern

kräftiges Modell



PENNYBACKER

FF349R

Probe dissector

Sonde und Dissektor

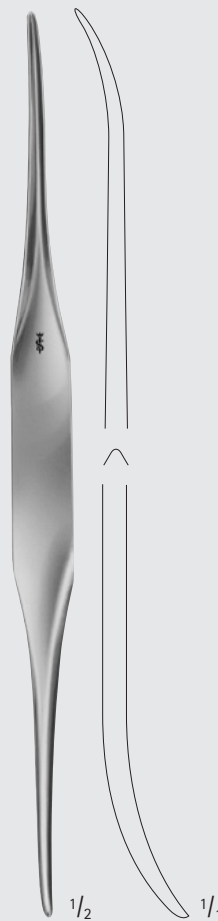
230 mm, 9"



O'CONNELL

FF730R

220 mm, 8 3/4"



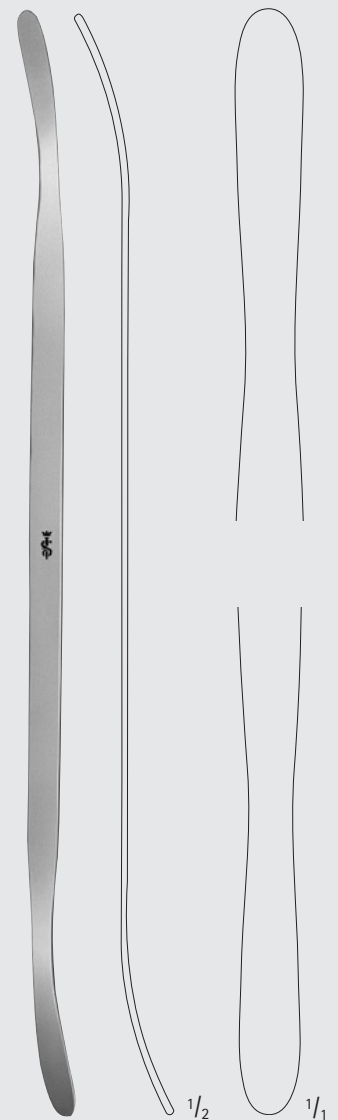
TÖNNIS

FF308R

Grooved director

Hohlsonde

240 mm, 9 1/2"



PENFIELD

FF295R

Fig. 5

slightly curved

leicht gebogen

290 mm, 11 1/2"

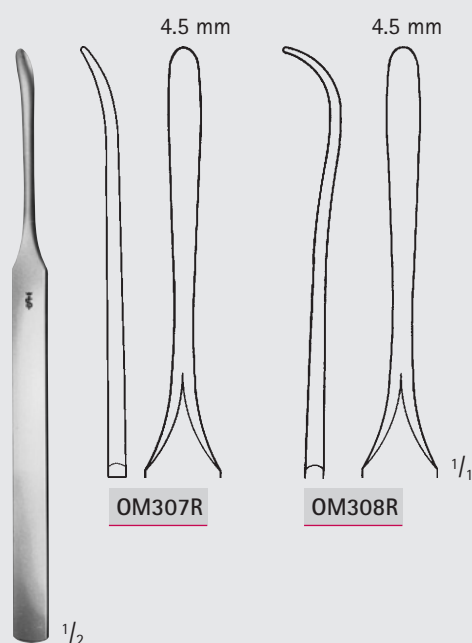
Vascular
Gefäß

MILLIMETERS

Vascular Instruments – Gefäßinstrumente

Vascular Spatulas, Dissectors, Elevators

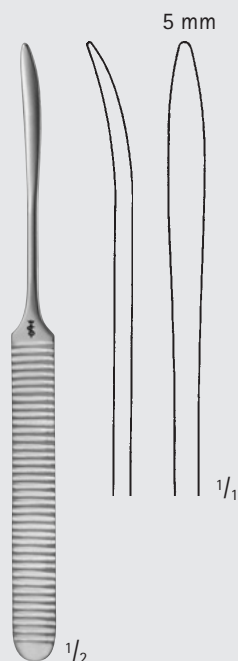
Gefäßspatel, Dissektoren, Elevatoren



KÖNIG

OM307R-OM308R

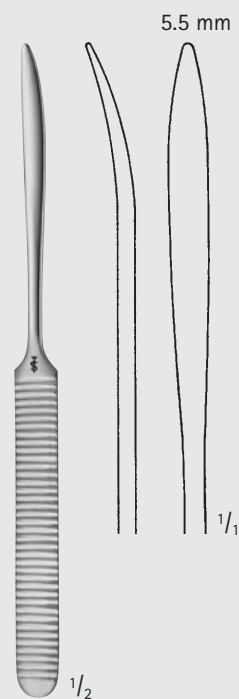
155 mm, 6"



WILLIGER

FK120R

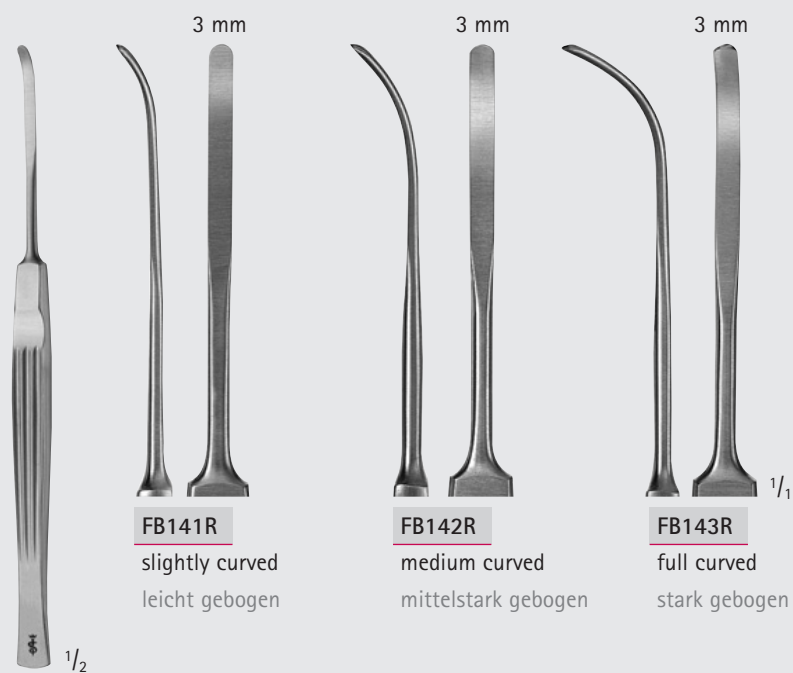
165 mm, 6 1/2"



WILLIGER

FK121R

170 mm, 6 3/4"



LEMMON

FB141R-FB143R

Intima dissectors

Intima Dissektoren

165 mm, 6 1/2"



Vascular Instruments – Gefäßinstrumente

Vascular Spatulas, Dissectors, Elevators

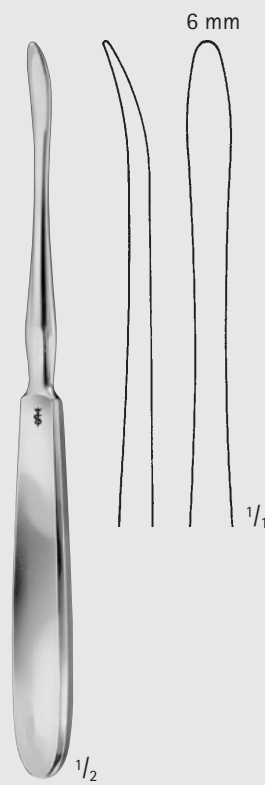
Gefäßspatel, Dissektoren, Elevatoren



SEBILEAU

FK124R

175 mm, 7"



QUERVAIN

FK133R

195 mm, 7 3/4"

Vascular
Gefäß

MILLIMETERS

Vascular Instruments – Gefäßinstrumente

Nerve and Vessel Hooks

Nerv- und Gefäßhäkchen

Dimensions for blade size of retractors

1st number = depth Example: 25 x 38 mm

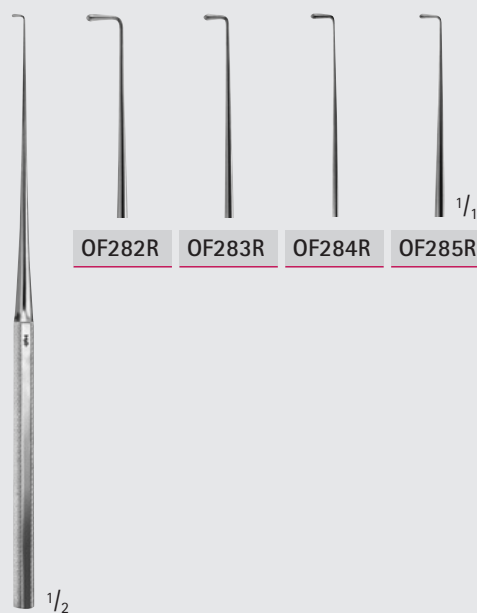
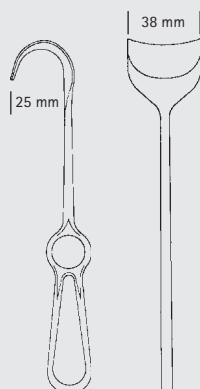
2nd number = width

Maßangaben für Blattgrößen der Wundhaken

1. Zahl = Tiefe

Beispiel: 25 x 38 mm

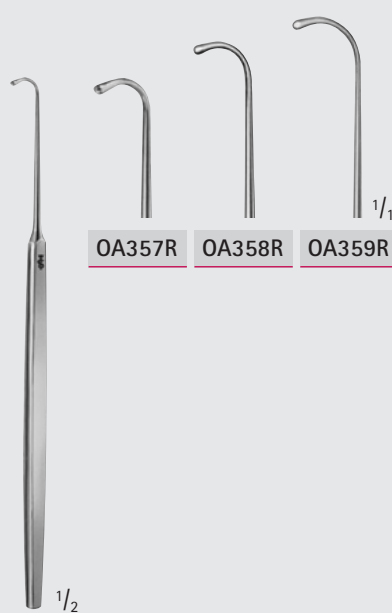
2. Zahl = Breite



WAGENER

OF282R–OF285R

150 mm, 6"



GRAEFE

OA357R–OA359R

140 mm, 5 1/2"



ST. BARTS

OF288R

180 mm, 7"



Vascular Instruments – Gefäßinstrumente

Nerve and Vessel Hooks

Nerv- und Gefäßhäkchen

Nervų ir kraujagyslių kabliukai



BROM

BT075R

Vein hook

Venenhäkchen

170 mm, 6 $\frac{3}{4}$ "



CRILE

BT080R

200 mm, 8"



CUSHING

BT082R-BT083R

190 mm, 7 $\frac{1}{2}$ "

Vascular
Gefäß

MILLIMETERS

Vascular Instruments – Gefäßinstrumente

Nerve and Vessel Hooks

Nerv- und Gefäßhaken

Dimensions for blade size of retractors

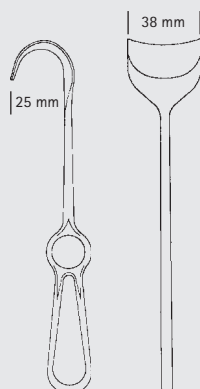
1st number = depth Example: 25 x 38 mm

2nd number = width

Maßangaben für Blattgrößen der Wundhaken

1. Zahl = Tiefe Beispiel: 25 x 38 mm

2. Zahl = Breite

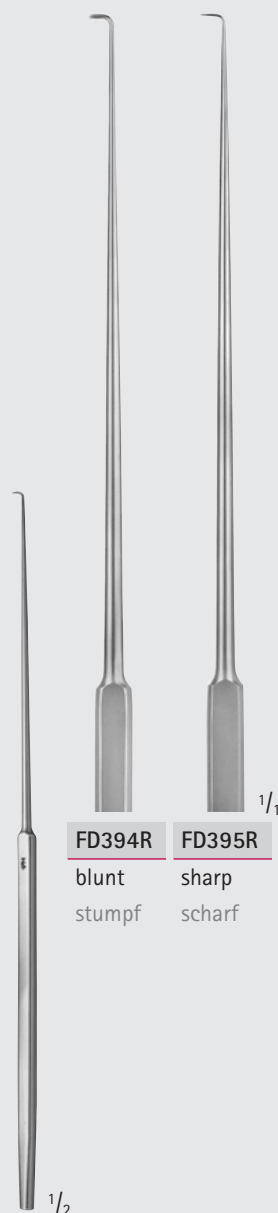


FD396R FD397R FD398R FD399R ^{1/2}

KRAYENBÜHL

FD396R-FD399R

185 mm, 7 1/4"



FD394R FD395R ^{1/2}

blunt sharp
stumpf scharf

ADSON

FD394R-FD395R

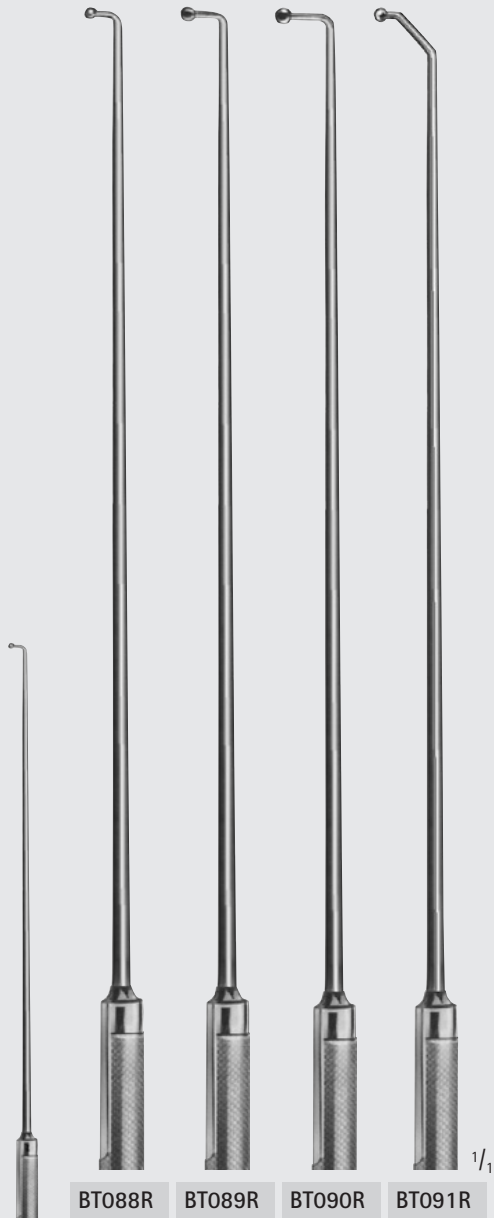
190 mm, 7 1/2"



Vascular Instruments – Gefäßinstrumente

Nerve and Vessel Hooks

Nerv- und Gefäßhäkchen



BT088R

BT089R

BT090R

BT091R

1/1

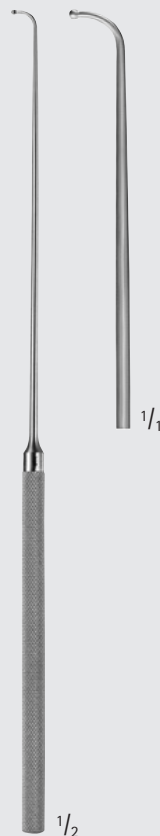
1/2

CASPAR

BT088R-BT091R

Exploration hooks, probe-ended
Explorationshäkchen, geknöpft

245 mm, 9 3/4"



1/1

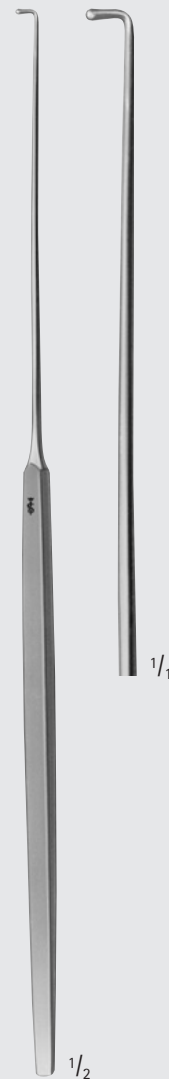
1/2

CASPAR

BT081R

Exploration hook, probe-ended
Explorationshäkchen, geknöpft

215 mm, 8 1/2"



1/1

1/2

CUSHING

BT084R

280 mm, 11"



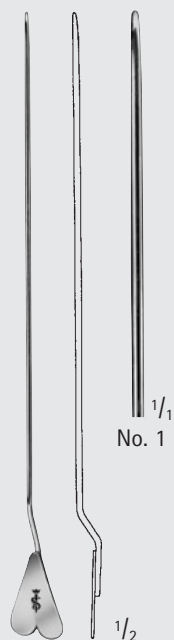
Vascular
Gefäß

MILLIMETERS

Vascular Instruments – Gefäßinstrumente

Probes

Sonden



No. 1

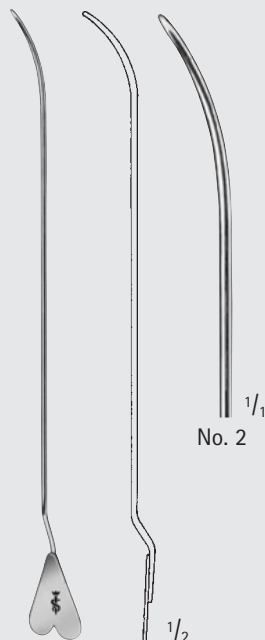
LOCKHART-MUMMERY

BN021R

Fistula probe, straight

Fistelsonde, gerade

165 mm, 6 1/2"



No. 2

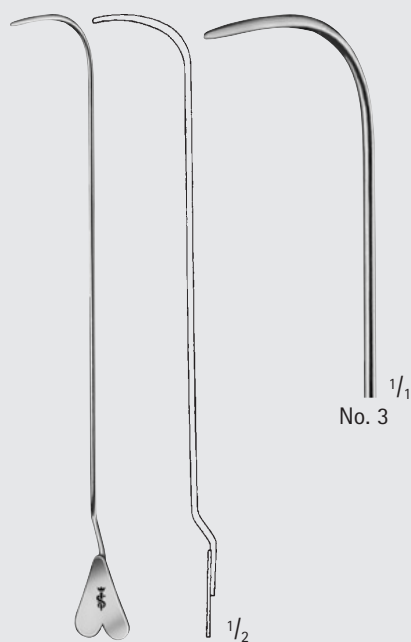
LOCKHART-MUMMERY

BN022R

Fistula probe, 45° curved

Fistelsonde, 45° gebogen

165 mm, 6 1/2"



No. 3

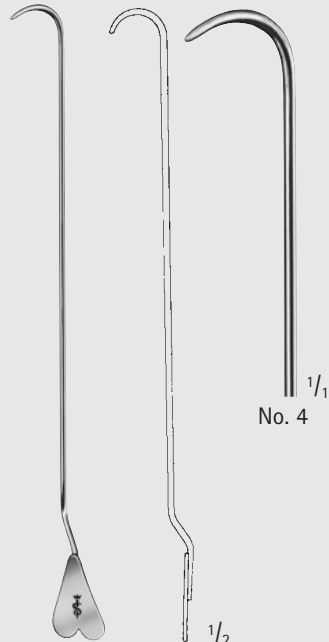
LOCKHART-MUMMERY

BN023R

Fistula probe, 90° curved

Fistelsonde, 90° gebogen

165 mm, 6 1/2"



No. 4

LOCKHART-MUMMERY

BN024R

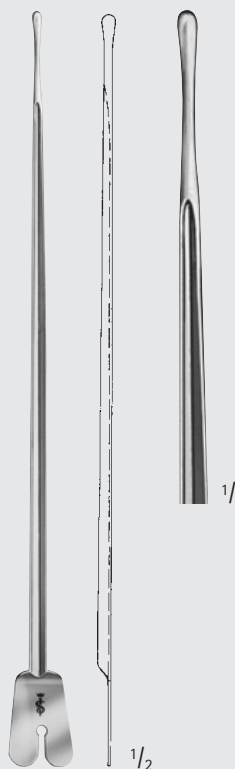
Fistula probe, retrograde curved

Fistelsonde, retrograd gebogen

165 mm, 6 1/2"

Diam. of tip: 3.5 mm

Knopf-Ø: 3,5 mm



No. 1

BRODIE

BN020R

Director with probe

Hohlsonde mit Knopf

200 mm, 8"



Vascular Instruments – Gefäßinstrumente

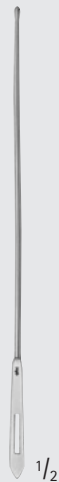
Probes
Sonden



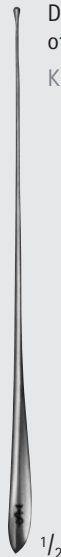
Diam. of tip
Knopf-Ø

| | | |
|---------------|--------|---|
| BN034R | 2,5 mm | 145 mm, 5 ³ / ₄ " |
| BN036R | 2,5 mm | 160 mm, 6 ¹ / ₄ " |
| BN040R | 3,0 mm | 200 mm, 8" |

Probes with eye
Öhrsonden



MB603R
125 mm, 5"



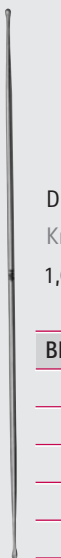
Diam.
of tip: 1.5 mm
Knopf-Ø: 1,5 mm

BN054R
Myrtle leaf probe
Myrtenblattsonde
145 mm, 5 ³/₄ "



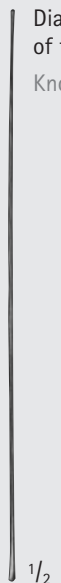
Diam.
of tip: 2.0 mm
Knopf-Ø: 2,0 mm

BN063R 130 mm, 5 ¹/₈ "
BN064R 145 mm, 5 ³/₄ "
BN066R 160 mm, 6 ¹/₄ "
BN068R 180 mm, 7"
BN070R 200 mm, 8"
Myrtle leaf probes
Myrtenblattsonden



| Diam. of tip Knopf-Ø | | | Length Länge |
|-------------------------|---------------|---------------|---|
| 1,0 mm | 1,5 mm | 2,0 mm | |
| | BN113R | | 130 mm, 5 ¹ / ₈ " |
| BN104R | BN114R | BN134R | 145 mm, 5 ³ / ₄ " |
| | BN116R | BN136R | 160 mm, 6 ¹ / ₄ " |
| | BN118R | BN138R | 180 mm, 7" |
| | BN120R | BN140R | 200 mm, 8" |
| | BN125R | | 250 mm, 10" |
| | | BN150R | 300 mm, 12" |

Probes
Knopfsonden



Diam.
of tip: 1.2 mm
Knopf-Ø: 1,2 mm

BN110
Probe
Knopfsonde
150 mm, 6"



Diam.
of tip: 3.0 mm
Knopf-Ø: 3,0 mm

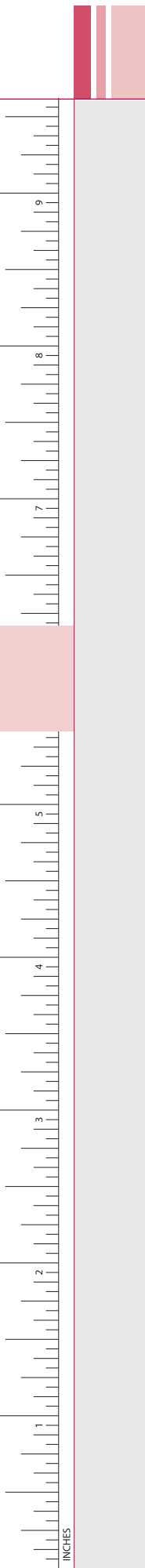
BN090R
Double ended probe,
malleable, with hole
Doppelknopfsonde,
biegsam, mit Loch
190 mm, 7 ¹/₂ "



Diam.
of tip: 3.5 mm
Knopf-Ø: 3,5 mm

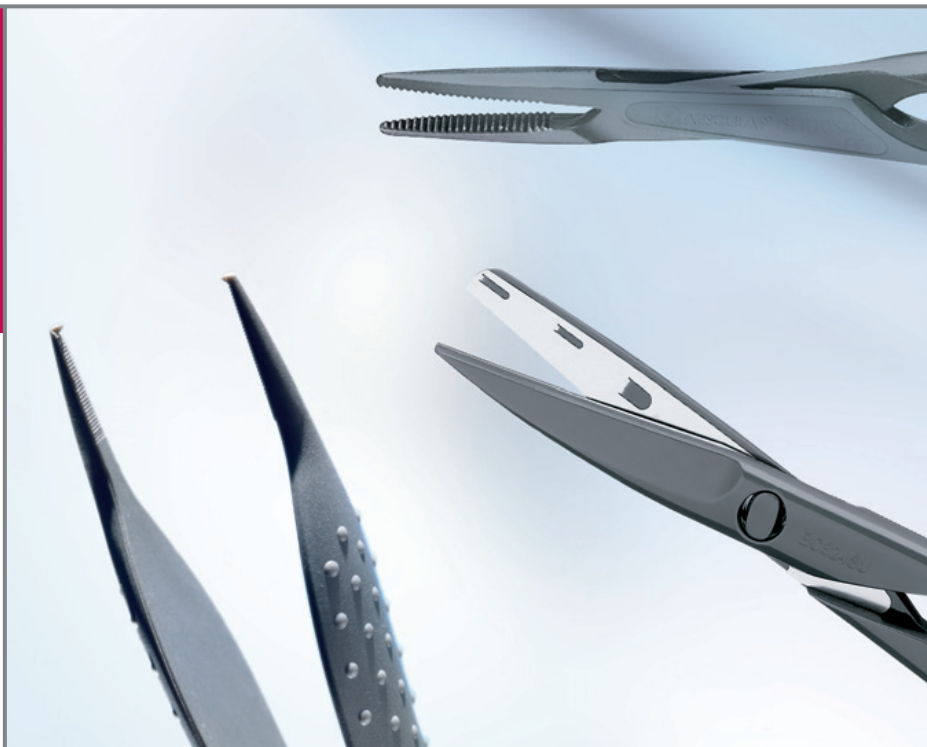
BN095 250 mm, 10"
BN096 300 mm, 12"
Double ended probes,
tin, malleable
Doppelknopfsonden,
Zinn, biegsam







SUSI



SUSI®

Single Use Surgical Instruments

Pack per case – Procedure Sets

Eingriffsgerechte chirurgische Behandlungs-Sets



„All inclusive“:

- high quality single use instrumentation
- all required consumables

At your finger tips! Ready for use when required

- instantly available
- always complete
- always sterile (sterilised in acc. to validated sterilisation process)
- 100% reliable
- procedure related cost transparency
- no additional service cost (e.g. repair cost, etc..)
- always up-to-date

„All inclusive“:

- hochwertiges Einmalinstrumentarium
- benötigtes Verbrauchsmaterial

Mit einem Griff

- immer schnell einsetzbar
- immer komplett verfügbar
- immer steril (nach einem validierten Aufbereitungsverfahren)
- immer zu 100% funktionsfähig
- immer mit eindeutiger und fallbezogener Kostentransparenz
- immer ohne Nebenkosten (z.B. Reparatur)
- immer auf dem neuesten Stand



SUSI® – Single Use Surgical Instruments

Procedure Sets

Behandlungs-Sets



For further details see
brochure No. C82002

Weitere Informationen finden
Sie in unserem Prospekt C82001



SUSI (Single Use Surgical Instruments) Instrumentation is a completely unique range of single use surgical instruments. Utilising proven established design patterns and the use of light high performance polymers for the production provides you with high precision instruments with excellent mechanical properties. The material used allows simple, secure and environmentally friendly incineration utilising existing disposal systems in hospitals.

SUSI instruments are also available individually sterile packed in a dispenser box.

"Pack per case" procedure sets have proven their suitability on hospital wards, in intensive care units, A&E Departments, Outpatient Departments, Nursing homes, GP surgeries & practices and can also be used by ambulance services. For all these areas of application, SUSI procedure sets not only offer medical advantages but also plenty of saving potentials. Should you have specific needs and requirements (i.e. custom made sets or economic analysis) please do not hesitate to contact us.

SUSI (Single Use Surgical Instruments) ist eine völlig einzigartige Linie chirurgischer Einmalinstrumente. Hergestellt aus einem leichten Hochleistungspolymer und unter Beibehaltung des vertrauten und bewährten Designs, werden höchste Präzision sowie ausgezeichnete mechanische Eigenschaften erzielt. Der eingesetzte Werkstoff ermöglicht eine sichere, einfache und umweltfreundliche Entsorgung durch Verbrennung im Rahmen des normalen Entsorgungssystems der Klinik.

SUSI Instrumente sind selbstverständlich auch einzeln steril verpackt im Spenderkarton erhältlich.

„Pack per Case“ hat sich besonders für den Einsatz auf den Stationen in den Bereichen Intensiv- und Unfallmedizin, in der Ambulanz sowie Pflegediensten, im niedergelassenen Bereich sowie im externen Rettungswesen bewährt. Dabei bietet das SUSI Konzept eine eindeutige und fallbezogene Kostentransparenz und stellt somit eine sowohl medizinisch wie auch wirtschaftlich optimale Lösung dar. Gerne sprechen wir auch über Ihre speziellen Wünsche und Vorstellungen.

ISNS

MILLIMETERS

SUSI® – Single Use Surgical Instruments

Procedure Sets

Behandlungs-Sets

5063010 SUSI Cardiac Pacemaker Set

5063010 SUSI Herzschrittmacher-Set



| Contents | pieces |
|---|--------|
| Cover drape 236 x 300 cm, with slit 9 x 108 cm | 1 |
| Anesthesia drape 152 x 250 cm | 1 |
| Cover drape, self-adhesive, 75 x 90 cm | 2 |
| C-Bend Cover 70 + 43 x 200 cm | 1 |
| Tray, 33 x 30 x 6 cm, white | 1 |
| Bowl round, 250 ml, light blue | 1 |
| Gauze swabs, round, 40 x 40 cm, X-ray marker | 5 |
| Gauze compress, 12-fold (ply), 10 x 10 cm, X-ray marker | 20 |
| Disposable scalpel size 22 | 1 |
| Omnifix injection syringe, Luer, Lock, 20 ml | 1 |
| Sterican canulla size 1, G 20 x 1 1/2, Ø 0.90 mm, 40 mm, yellow | 1 |
| Sucker bag 33 x 41 cm, 2 chambers, self-adhesive | 1 |
| Disposable electrode handle | 1 |
| SUSI Mosquito forceps, curved, 125 mm | 2 |
| SUSI dissecting scissors Metzenbaum, curved, 180 mm | 1 |
| SUSI haemostatic forceps Birkett, curved, 185 mm | 2 |
| SUSI needleholder Crile Wood, straight, 200 mm | 1 |
| SUSI tissue forceps Waughs, 200 mm | 1 |
| SUSI sponge forceps, curved, 265 mm | 1 |
| SUSI dissecting forceps Cushing, 200 mm | 1 |
| SUSI self-retaining retractor Weitlaner, 3 x 4 teeth, 130 mm | 1 |
| SUSI retractor Roux, 170 mm | 1 |
| Bowl, round, 120 ml, transparent | 2 |
| Askina Soft 9 x 10 cm | 1 |
| Suture Monosyn violet 3/0 (2), 70 cm, HR26 | 1 |
| Suture Monosyn undyed 4/0 (1.5), 70 cm, DSMP24 | 1 |
| Suture Silkam black 0 (3.5), 75 cm, 1 x HR26 | 1 |
| Operation gown, 130 cm | 2 |
| Table bag, 75 x 141 cm | 1 |
| Table cover, 137 x 190 cm | 1 |

Order unit: PAK = Pack of 4 sets

| Inhalt | Stück |
|--|-------|
| Schlitztuch 236 x 300cm, Schlitz 9 x 108 cm | 1 |
| Anästhesietuch 152 x 250 cm | 1 |
| Abdecktuch, selbstklebend, 75 x 90 cm | 2 |
| C-Bogenhaube 70 + 43 x 200 cm | 1 |
| Tray, rechteckig, 6000 ml, weiß, 33 x 30 x 6 cm | 1 |
| Schale rund, 250 ml, hellblau | 1 |
| Tupfer, extragroß, Rundform 40 x 40 cm, RK | 5 |
| Kompressen, 12-fach, 10 x 10 cm, RK | 20 |
| Cutfix Einmalskalpell, Fig. 22 | 1 |
| Omnifix-Spritze, Luer, Lock, 20 ml | 1 |
| Sterican Kanüle Größe 1, G20x1 1/2, Ø 0,90 mm, 40 mm, gelb | 1 |
| Saugertasche 33 x 41cm, PE, 2 Kammer, selbstklebend | 1 |
| Elektrodenhalter mit Fingertaster und Messerelektrode | 1 |
| SUSI Mosquitoklemme, gebogen, 125 mm | 2 |
| SUSI Präriarschere Metzenbaum, gebogen, 180 mm | 1 |
| SUSI Arterienklemme Birkett, gebogen, 185 mm | 2 |
| SUSI Nadelhalter Crile Wood, gerade, 200 mm | 1 |
| SUSI chirurgische Pinzette Waughs, 200 mm | 1 |
| SUSI Kornzange, gebogen, 265 mm | 1 |
| SUSI anatomische Pinzette Cushing, 200 mm | 1 |
| SUSI Wundspreizer Weitlaner, 3 x 4 Zähne, halbscharf | 1 |
| SUSI Wundhaken Roux, 170 mm | 1 |
| Schale, rund, 120 ml, transparent | 2 |
| Askina Soft 9 x 10 cm | 1 |
| Monosyn Violett 3/0 (2), 70 cm, HR26 | 1 |
| Monosyn Ungefärbt 4/0 (1,5), 70CM, DSMP24 (M) | 1 |
| Silkam Schwarz 0 (3,5), 75 cm, 1 x HR26 | 1 |
| OP Kittel, Standard, 130 cm | 2 |
| Instrumentiertischbezug, 75 x 141cm | 1 |
| Tischabdeckung, 137 x 190cm | 1 |

Bestelleinheit: PAK = Packung à 4 Sets



SUSI® – Single Use Surgical Instruments

Procedure Sets

Behandlungs-Sets

5062010 SUSI Thorax Drainage Set



| Contents | pieces |
|---|--------|
| Plastic tray, 38 x 28 x 3 cm | 1 |
| Drape, 75 x 90 cm | 1 |
| Surgical gloves, size 7.5, powder free | 1 |
| Gauze compress, 10 x 10 cm, 12-fold (ply) | 8 |
| Slit compress, 10 x 10 cm, 12-fold (ply) | 2 |
| Bowl, round, 250 ml | 1 |
| SUSI sponge forceps, curved, 265 mm | 1 |
| Drape, 75 x 100 cm, self adhesive | 2 |
| Injection syringe, Luer, 10 ml | 1 |
| Sterican cannula size 1, G 20 x 1 1/2, Ø 0.90 mm, 40 mm, yellow | 1 |
| Sterican cannula, LL, G 18 x 1 1/2, Ø 1.20 mm, 40 mm, pink | 1 |
| Sterican cannula, LL, G 20 x 2 3/4, Ø 0.90 mm, 70 mm, yellow | 1 |
| Sterican Kanüle size 12, G 22 x 1 1/4, Ø 0.70 mm, 30 mm, black | 1 |
| Disposable scalpel size 11 | 1 |
| SUSI tissue forceps, sharp, 145 mm | 1 |
| SUSI Metzenbaum dissecting scissors, 180 mm | 1 |
| SUSI needle holder Mayo-Hegar, 150 mm | 1 |
| SUSI tubing clamp, 135 mm | 1 |
| Suture Synthofil green 0 (3.5), 75 cm, 1 x DS 30 | 1 |
| Suture Dafilon blue 3/0 (2), 75 cm, 1 x DS 19 | 1 |
| Askina fix fixation plaster, 15 x 20 cm | 2 |

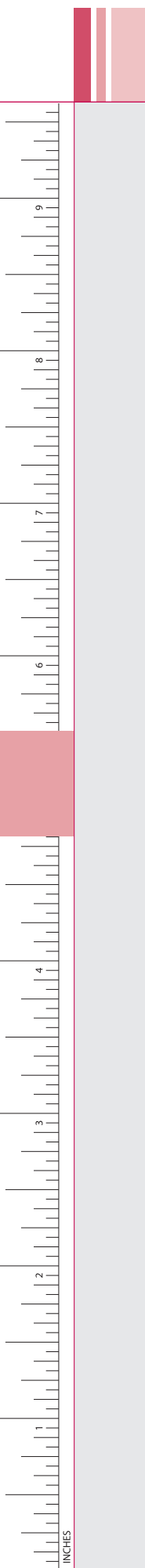
Order unit: PAK = Pack of 5 sets

5062010 SUSI Thorax Drainage Set



| Inhalt | Stück |
|---|-------|
| Kunststoff Tray, 38 x 28 x 3 cm | 1 |
| Abdecktuch, 75 x 90 cm | 1 |
| OP-Handschuhe, Gr. 7,5 o. Puder | 1 |
| Mullkompress, 10 x 10 cm, 12-fach | 8 |
| Schlitzkompress, 10 x 10 cm, 12-fach | 2 |
| Schale, rund, 250 ml | 1 |
| SUSI Tupferzange, gebogen, 265 mm | 1 |
| Abdecktuch, 75 x 100 cm, selbst klebend | 2 |
| Injektions-Spritze, Luer, 10 ml | 1 |
| Sterican Kanüle Größe 1, G 20 x 1 1/2, Ø 0,90 mm, 40 mm, gelb | 1 |
| Sterican Kanüle, LL, G 18 x 1 1/2, Ø 1,20 mm, 40 mm, rosa | 1 |
| Sterican Kanüle, LL, G 20 x 2 3/4, Ø 0,90 mm, 70 mm, gelb | 1 |
| Sterican Kanüle Größe 12, G 22 x 1 1/4, Ø 0,70 mm, 30 mm, schwarz | 1 |
| Einmalskalpell Fig. 11 | 1 |
| SUSI chirurgische Pinzette, scharf, 145 mm | 1 |
| SUSI Schere n. Metzenbaum, gebogen, 180 mm | 1 |
| SUSI Nadelhalter n. Mayo-Hegar, 150 mm | 1 |
| SUSI Schlauchklemme, 135 mm | 1 |
| Synthofil Grün Nahtmaterial 0 (3,5), 75 cm, 1 x DS 30 | 1 |
| Dafilon Blau Nahtmaterial 3/0 (2), 75 cm, 1 x DS 19 | 1 |
| Askina Fix Fixierpflaster 15 x 20 cm | 2 |

Bestelleinheit: PAK = Packung à 5 Sets



Endo



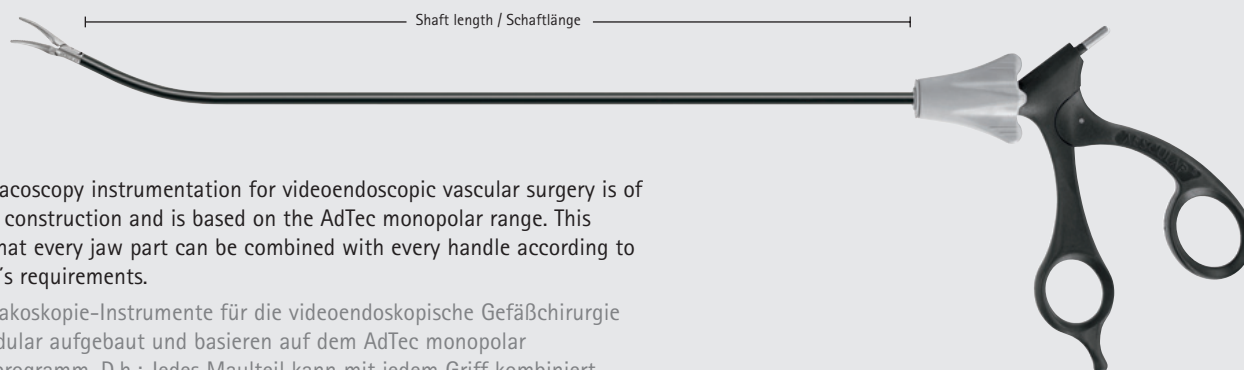
Endoscopy
Endoskopie

Endoscopy – Endoskopie

Thoracoscopy

Thorakoskopie

AdTec® monopolar



■ The thoracoscopy instrumentation for videoendoscopic vascular surgery is of modular construction and is based on the AdTec monopolar range. This means that every jaw part can be combined with every handle according to the user's requirements.

■ Die Thorakoskopie-Instrumente für die videoendoskopische Gefäßchirurgie sind modular aufgebaut und basieren auf dem AdTec monopolar Produktprogramm. D.h.: Jedes Maulteil kann mit jedem Griff kombiniert werden – je nach den Bedürfnissen des Anwenders.

Standard instrument – complete

Standardinstrument – komplett

| Complete Cat. No. Komplett Art. Nr. | Diam. Ø | Shaft length Schaft- länge |
|--|------------|-------------------------------------|
|--|------------|-------------------------------------|

| | | |
|---|------|--------|
| - | 5 mm | 310 mm |
|---|------|--------|



METZENBAUM

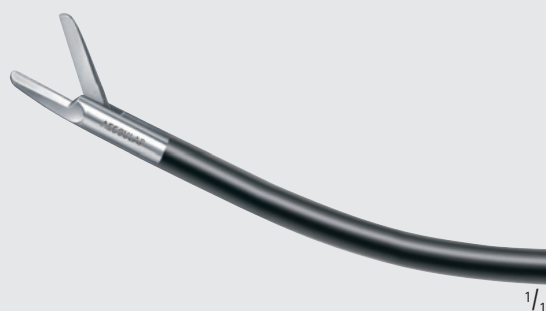
Scissors, serrated, tips curved to the left, with carbide inserts, distal shaft bent

For use with flexible 7 or 13 mm trocars only

Schere gezahnt, Blätter nach links gebogen, mit Hartmetalleinlage, Schaft gebogen

Zur Verwendung mit flexiblen 7 oder 13 mm Trokaren

1/1



Peritoneal scissors, serrated, distal shaft bent

For use with flexible 7 or 13 mm trocars only

Peritonealschere, gezahnt, Schaft gebogen

Zur Verwendung mit flexiblen 7 oder 13 mm Trokaren

1/1



MARYLAND

Fixation and dissecting forceps, curved, distal shaft bent

For use with flexible 7 or 13 mm trocars only

Fass- und Präparierzange, aufgebogen, Schaft gebogen

Zur Verwendung mit flexiblen 7 oder 13 mm Trokaren




1/1


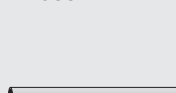
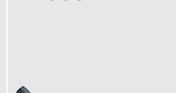
| | | |
|---|------|--------|
| - | 5 mm | 310 mm |
|---|------|--------|


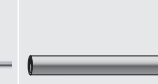

| | | |
|---|------|--------|
| - | 5 mm | 310 mm |
|---|------|--------|

Single parts

Einzelkomponenten

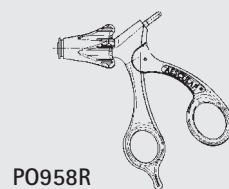
| | | |
|--|---|---|
| Jaw inserts | Insulated outer tube | Handle |
| Mauleinsatz | Isoliertes Außenrohr | Griff |
| PO636R + PM940R | PM983P | PM955R |
|  |  |  |

| | | |
|---|---|---|
| PM637R + PM940R | PM983P | PM955R |
|  |  |  |

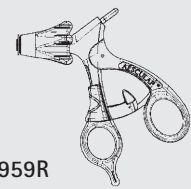
| | | |
|--|---|---|
| <p>PO669R + PM940R</p>  | <p>PM983P</p>  | <p>PM955R</p>  |
|--|---|---|

Individual components

Individuelle Komponenten



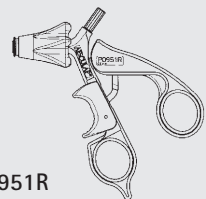
P0958R



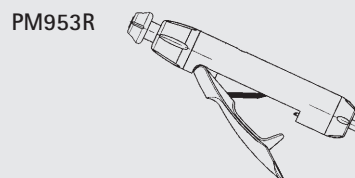
P0959R



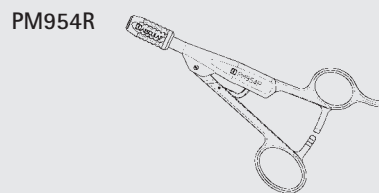
P0950R



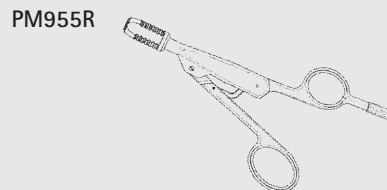
P0951R



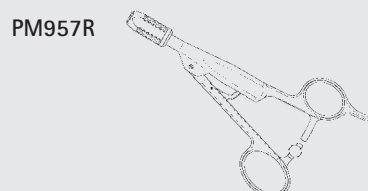
PM953R



PM954R



PM955R



PM957R



Standardinstrument – komplett

| | | |
|----------------------|-------|------------------|
| Complete Cat. No. | Diam. | Shaft length |
| Komplett Art. Nr. | Ø | Schaft- länge |

| | | |
|---|------|--------|
| - | 5 mm | 310 mm |
|---|------|--------|



HEYWOOD-SMITH

Tissue and swab forceps, distal shaft bent

For use with flexible 13 mm trocars only

Organ- und Tupferzange, Schaft gebogen

Zur Verwendung mit flexiblen 13 mm Trokaren



Pike-mouth forceps with reservoir in the jaw, distal shaft gebogen

For use with flexible 7 or 13 mm trocars only

Hechtmaulzange mit Reservoir im
Maul, Schaft gebogen

Zur Verwendung mit flexiblen 7 oder 13 mm
Trokaren



NELSON

Grasping forceps sharp,
distal shaft bent

For use with flexible 7 or 13 mm trocars only

Fasszange scharf,
Schaft gebogen

Zur Verwendung mit flexiblen 7 oder 13 mm
Trokaren



Sample excision forceps,
distal shaft bent

For use with flexible 7 or 13 mm trocars only

Probeexzisionszange,
Schaft gebogen

Zur Verwendung mit flexiblen 7 oder 13 mm
Trokaren



AdTec[®]monopolar

Endoscopy – Endoskopie
Thoracoscopy
Thorakoskopie

Single parts

Einzelkomponenten

Jaw inserts

Mauleinsatz

Insulated
outer tube

Isoliertes
Außenrohr

Handle

Griff

PO641R + PM940R

PM983P

PM954R



PO642R + PM940R

PM983P

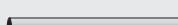
PM954R



PO638R + PM940R

PM983P

PM954R



PM643R + PM940R

PM983P

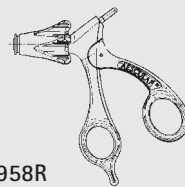
PM954R



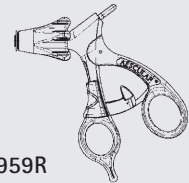
Individual components

Individuelle Komponenten

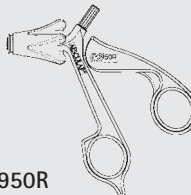
PO958R



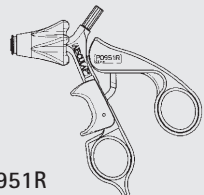
PO959R



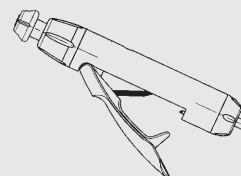
PO950R



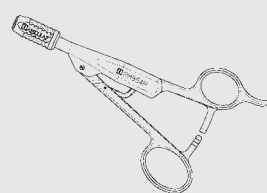
PO951R



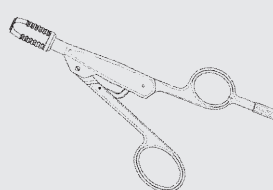
PM953R



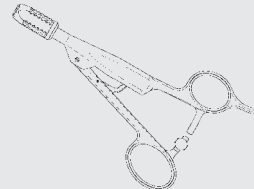
PM954R



PM955R

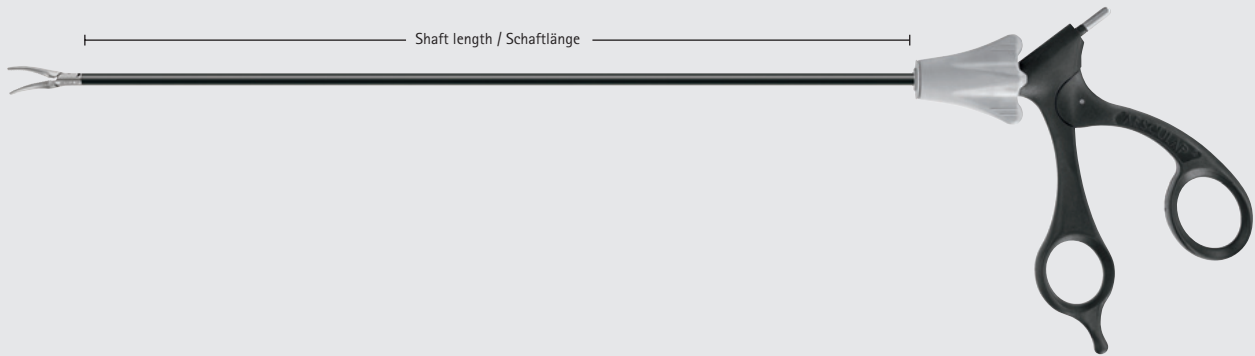


PM957R



Endo

MILLIMETERS



Standard instrument – complete
 Standardinstrument – komplett

| Complete Cat. No. Komplett Art. Nr. | Diam. Ø | Shaft length Schaft- länge |
|--|------------|-------------------------------------|
|--|------------|-------------------------------------|

| | | |
|---|------|--------|
| - | 5 mm | 310 mm |
|---|------|--------|



BABCOCK
 Tissue grasping forceps
 For use with flexible 13 mm trocars only
 Organfasszange
 Zur Verwendung mit flexiblen 13 mm Trokaren



ALLIS
 Atraumatic tissue grasping forceps
 For use with flexible 13 mm trocars only
 Atraumatische Organfasszange
 Zur Verwendung mit flexiblen 13 mm Trokaren

| | | |
|---|------|--------|
| - | 5 mm | 310 mm |
|---|------|--------|



LINDER
 Endo lung grasping forceps
 For use with flexible 13 mm trocars only
 Endo-Lungenfasszange
 Zur Verwendung mit flexiblen 13 mm Trokaren

| | | |
|---|------|--------|
| - | 5 mm | 220 mm |
|---|------|--------|



LINDER
 Endo lung grasping forceps
 For use with flexible 13 mm trocars only
 Endo-Lungenfasszange
 Zur Verwendung mit flexiblen 13 mm Trokaren

| | | |
|---|------|--------|
| - | 5 mm | 310 mm |
|---|------|--------|